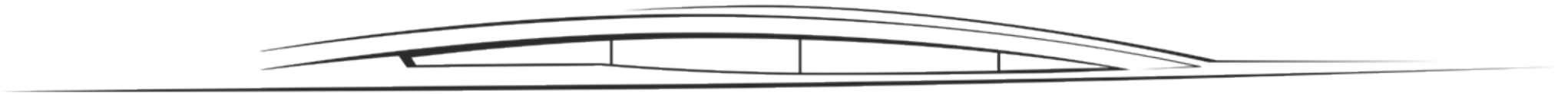


JEANNEAU 64



JEANNEAU
YACHTS

Specifications

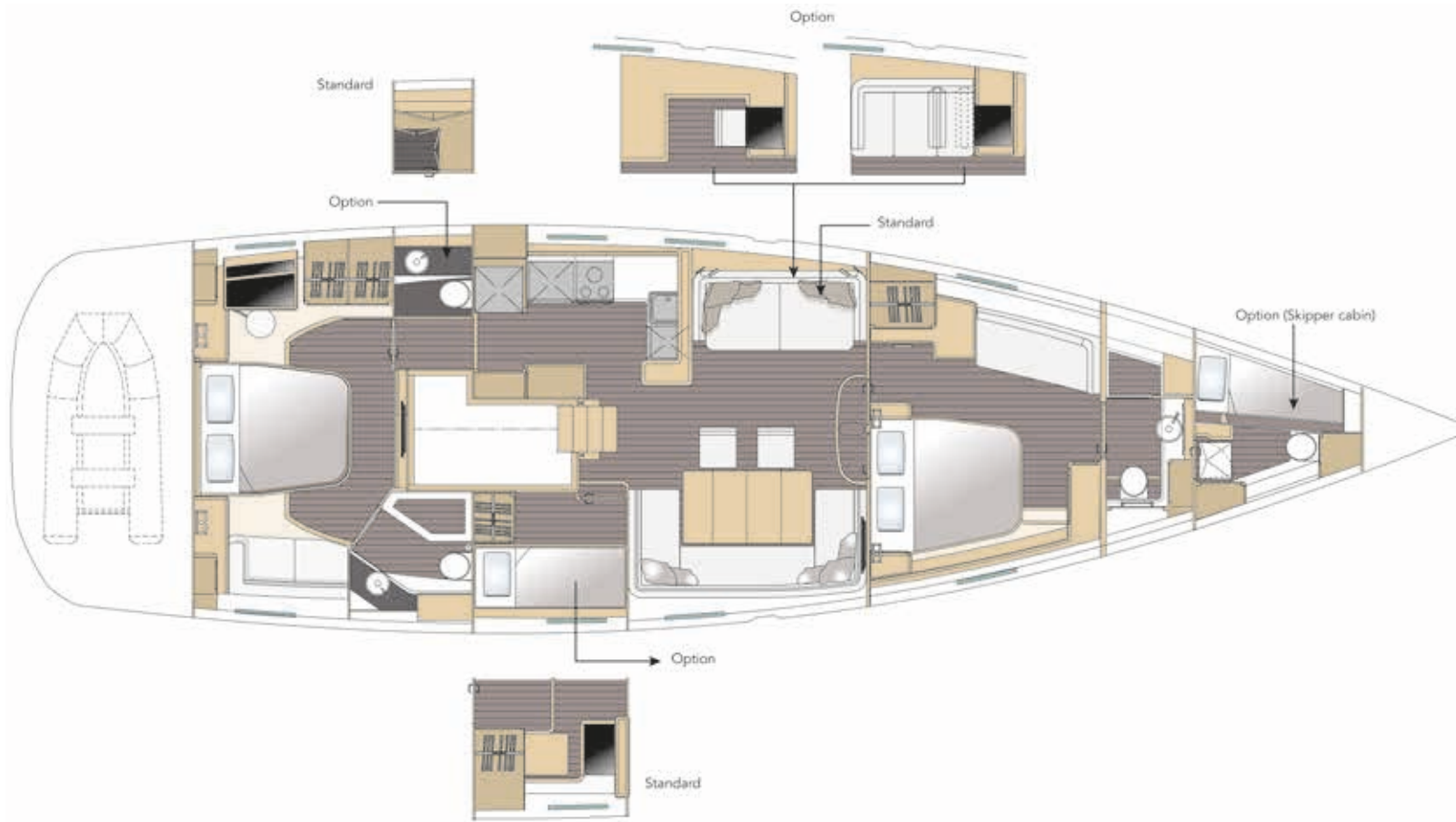
Overall length	20,20 m / 66' 3"
Overall Length with Bowsprit	20,46 m / 67' 2"
Hull length	19,55 m / 64' 1"
Waterline length	18 m / 59'
Beam	5,40 m / 17' 8"
Displacement (empty)	31,000 kg / 68,343 lbs
Displacement (maximum)	37,000 kg / 81,571 lbs
Standard keel weight	9,350 kg / 20,613 lbs
Standard keel draft	2,95 m / 9' 8"
Shallow keel weight	10,550 kg / 23,259 lbs
Shallow keel draft	2,20 m / 7' 2"
Fuel capacity	825 L / 218 US Gal
Water capacity	1000 L / 265 US Gal
Waste capacity	264 L / 70 US Gal
Cabins	2 / 3 / 4 / 5 / 6
Engine:	Volvo D4-180-180 HP / 132 kW

I	25,00 m / 82'
J	7,57 m / 24' 10"
P	24 m / 78' 8"
E	7,60 m / 24' 11"
Mainsail (furling)	90 m ² / 968 sq ft
Mainsail (full-batten)	107 m ² / 1151 sq ft
Self-tacking jib	80 m ² / 861 sq ft
Genoa (110 %)	102 m ² / 1098 sq ft
Spinnaker	300 m ² / 3228 sq ft
Asymmetrical spinnaker	300 m ² / 3228 sq ft
Mast height above waterline	29,10 m / 95' 5"
CE Category	A12 / B13 / C18 / D20
Architects / Designers	Philippe Briand Yacht Design
	Winch Design
	Jeanneau Design



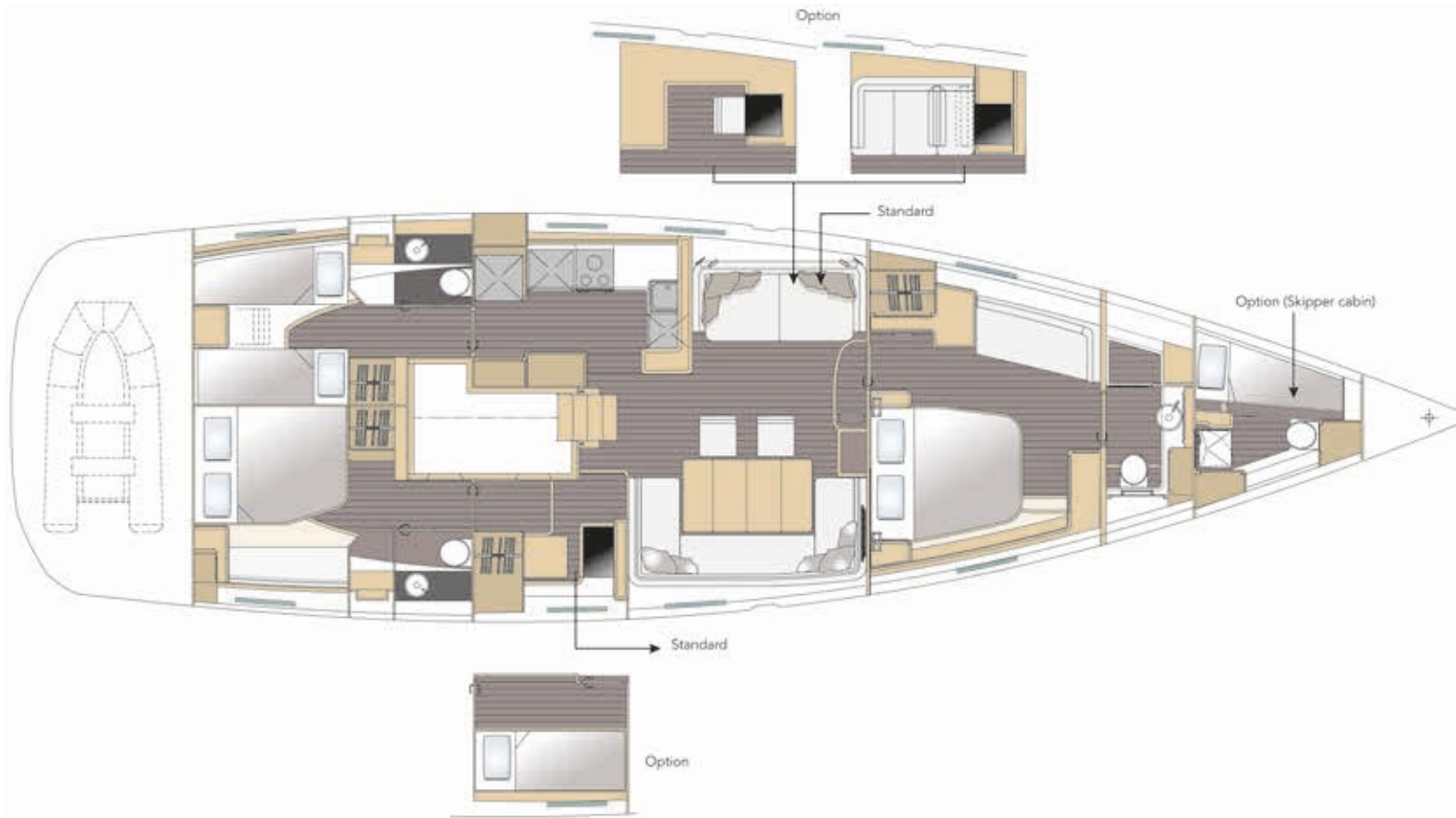
JEANNEAU
YACHTS

2 cabins version with owner's staterooms forward and aft / 2 heads



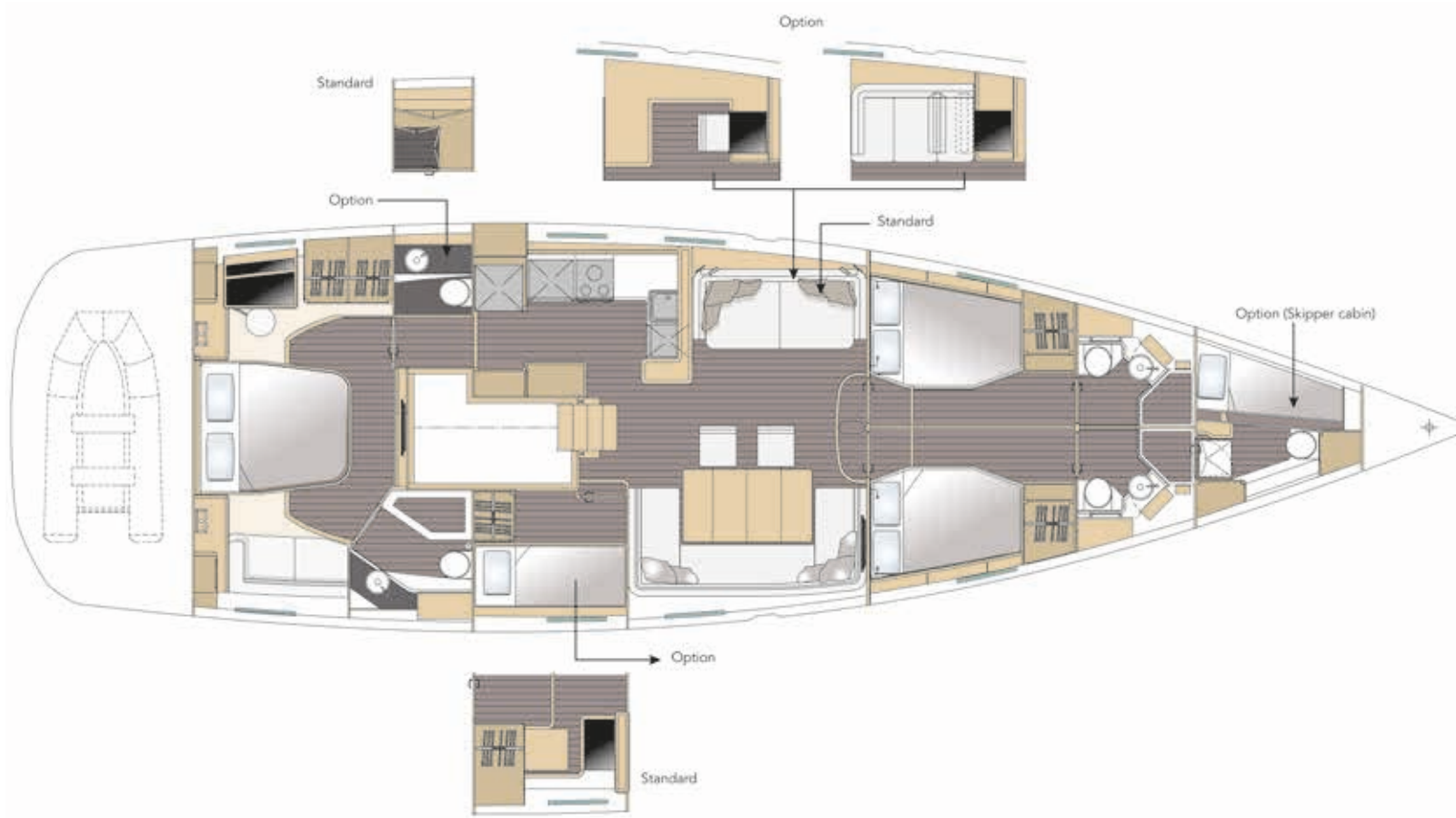
JEANNEAU
YACHTS

3 cabins version with owner's stateroom forward / 3 heads



JEANNEAU
YACHTS

3 cabins version with owner's stateroom aft / 3 heads



JEANNEAU
YACHTS

CONSTRUCTION

Isophthalic NG gelcoats used to ensure bright and lasting finish. Polyester resins used throughout. Each batch of resin and gelcoat receives laboratory testing before use. Finite element analysis was performed in high-load areas during the engineering process.

HULL

Vacuum infused with discontinuous, end-grain balsa. Solid laminate in keel area. Barrier coat used to guard against osmosis.

HULL STRUCTURE

3rd Generation counter-moulded structure glued and laminated to hull for strength. High-load zones cut-out for access to the hull. Subflooring in saloon area framed with aluminium.

10 HULL PORTS in acrylic, bonded from exterior

FLAIRED BOW THRUSTER TUBE moulded into the hull to reduce drag

COMPOSITE BULKHEADS are vacuum infused and fully laminated 360 degrees

BILGE AREAS finished with a gelcoat paint

DECK is vacuum infused with discontinuous, end-grain balsa. Wood coring used in high-load areas. Proprietary and highly-effective non-skid pattern is moulded into side decks and coachroof

APPENDAGES

Each appendage was designed by Briand Yacht Design to correspond to the navigation profile of a stable, offshore cruiser.

DEEP KEEL epoxy encapsulated cast-iron - 2,95 m / 9'8"

Option

WINGED SHOAL KEEL epoxy encapsulated cast-iron - 2,20 m / 7'2"

FULLY BALANCED SPADE RUDDER with a foam core and GRP skin over a stainless steel rudder post

STEERING SYSTEM uses stainless steel cables driven by sprockets in the steering consoles

JEFA, AUTO-ALIGNING BEARINGS

DECK EQUIPMENT

The highest quality components, sourced from the leading suppliers, make up the standard deck equipment. Harken and Spinock equipment is used extensively. Exterior wood used in cockpit and on side decks is Teak.

FIXED STEMHEAD FITTING in 316 stainless steel with anchor roller

ATTACHMENT POINT for Code 0 or asymmetrical spinnaker on bow

ANCHOR WINDLASS 3000 W / 24 V with a chainwheel for 14 mm chain and a line drum mounted below deck

ANCHOR LOCKER with double access hatches from the deck and location for manual handle and bitter end attachment point

OPEN BOW PULPIT in 316 stainless steel

DOUBLE LIFELINES in stainless steel Dyform wire, 75 cm / 30" high

LIFELINE GATES located just aft of midships to either side

DECK-EDGE BULWARK in GRP runs from stem to stern

MOORING CLEATS in aluminium

- 2 at the bow
- 2 forward quarter
- 2 midships
- 2 at the stern

RUB SRAKES in 316 stainless steel below each cleat location

MAST COLLAR (keel-stepped mast) in anodised aluminium

MAIN CHAINPLATES in 316 stainless steel at deck edge

LARGE, FLUSH DECK HATCH (70 cm x 70 cm / 27" x 27") providing access to forward sail locker or optional skipper cabin. Hatch can be locked and has non-skid tape applied to surface.

FLUSH DECK HATCHES in foredeck

- 2 opening deck hatches (51 cm x 51 cm / 20" x 20") in forward washroom(s)
- 4 opening deck hatches (51 cm x 51 cm / 20" x 20") in forward cabin(s) with integrated ventilators
- 2 opening deck hatches (51 cm x 51 cm / 20" x 20") in galley and chart table / lateral cabin

LATERAL COACHROOF WINDOWS drape-formed acrylic and bonded to deck

FLUSH-MOUNTED DECK HATCHES on coachroof in main saloon

- 4 opening flush hatches (51 cm x 51 cm / 20" x 20")

NO-SILL COMPANIONWAY

- Drop-down vertical hatch in acrylic with lock mechanism
- Sliding horizontal hatch in acrylic
- Deep well provides drainage for cockpit

HARKEN DECK ORGANISERS on each side

SPINLOCK LINE STOPPERS on cockpit coaming

FOLDING PADEYES on deck and deck edge

HARKEN BALL-BEARING TRACK, curved for self-tacking jib integrated into forward end of deckhouse

GRP ARCH over cockpit provides support for cockpit canvas and removes mainsheet from cockpit area

2 STAND-UP BLOCKS on cockpit arch for mainsheet attachment

2 HARKEN 60 ELECTRIC "REWIND" SELF-TAILING COAMING-MOUNTED WINCHES WITH REMOTE ON HELM CONSOLES

2 LINE STORAGE BAGS integrated into coaming with step

2 HARKEN 70.2 SELF-TAILING COAMING-MOUNTED WINCHES for genoa sheets

STERN PUSHBIT in 316 stainless steel with fold-down ladder for access to transom and swim platform. Opening gate on port side to optional hydraulic gangway

FITTING FOR FLAG STAFF

FAIRLEADS ON TRANSOM

BOWSPRIT in option

COCKPIT & TRANSOM

While onboard, 80 % of the time is spent in the cockpit and, for this reason, particular attention was paid to the ergonomics of this vital area. It is a space to relax, play and enjoy every moment on the water. The size and comfort of the cockpit is truly unique. All seating, flooring, steps and swim platform are covered with inset Teak battens and black caulking. The cockpit is divided into 3 parts:

1) LOUNGING / DINING AREA protected by coachroof and optional sprayhood with seating for 10 people around 2 large cockpit tables

2) STEERING AREA with twin helm consoles, winches and engine controls

3) AFT SUNDECKS for lounging and access to stern lockers, garage and swim platform

2 TEAK COCKPIT TABLES with fixed legs

SECOND COMPANIONWAY provides access to aft owners or crew cabin via a curved, opening hatch at the aft end of the port side seating area

OPENING, CURVED HATCH into aft cabin at the aft end of the starboard side seating area

2 COMPOSITE STEERING CONSOLES each:

- Stainless steel 316 steering wheel 110 cm / 43" with a leather wrap
- Steering compass
- Stainless steel handrails
- Space for bow thruster control, autopilot control, electronic engine throttle, instrumentation and multi-touch GPS screen

SECOND WINDLASS CONTROL WITH CHAIN COUNTER

Optional INNOVATIVE OPENING RIGID BIMINI TOP

HELM SEATS with Teak battens

GAS LOCKER under helm seats for 2 gas bottles 27 cm / 10 5/8" in diameter and 45 cm / 17 11/16" high

AFT SUNDECKS provides a space to relax and offers the helmsman a comfortable seat behind the wheel

1 LARGE LIFERAFT LOCKER with pneumatically-assisted opening located on the centreline under the cockpit floor

ACCESS TO THE GARAGE AND COCKPIT STORAGE with pneumatically-assisted opening located under aft sundecks

LARGE FOLD DOWN SWIM PLATFORM provides easy access to the water. Integrated telescopic ladder

STORAGE GARAGE FOR TENDER opens electrically and contains:

- Remote
- Swim ladder
- Lighting fixtures
- Optional dinghy launching and retrieval system with electric winch and air compressor
- Designed for the Williams Jet tender 285 LP

2 BACKSTAY CHAINPLATES in stainless steel 316 on both sides of the stern

INLETS FOR SHORE POWER CABLES under starboard helm seat

RECESSED VENTS behind side windows for engine room ventilation, aft head extractor fans and galley extraction fan

LED COURTESY LIGHTING in cockpit

RECESSED STORAGE COMPARTMENTS on coachroof to each side of the companionway

MAST & RIGGING

KEEL-STEPPED, ANODISED ALUMINIUM IN-MAST FURLING MAST, FRACTIONAL RIG built by Sparcraft

TRIPLE, SWEPT BACK SPREADER DESIGN

MASTHEAD with 2 aft sheaves for main halyard and boom topping lift and 2 spinnaker sheaves forward

LED 360° ANCHOR LIGHT

1 FORWARD SHEAVE for genoa halyard

1 FORWARD SHEAVE and fitting for optional inner forestay or staysail

COMBINATIONSTEAMINGANDDECKLIGHT

FLAG HALYARD padeyes under first set of spreaders

ANODISED ALUMINIUM BOOM for in-mast furling with outhaul sheave and roller-bearing car on track

MAST-MOUNTED WINCH for tensioning halyards - size 50

HALYARD TENSIONER TRACKS for halyards of the furling sails

RIGID VANG with control line lead aft to the cockpit

WATERTIGHT THROUGH DECK FITTING with Harken mast base blocks

STANDING RIGGING is discontinuous Dyform wire rigging

RUNNING RIGGING

- Sheets and halyards in ultra low-stretch Dyneema
- Additional lines in low-stretch polyester

ELECTRIC GENOA FURLER with control at helm station

SAILS

The standard suit of sails for the Jeanneau 64 is provided by North Sails. They include a self-tacking jib and an in-mast furling main in SRPC - Spectra / Carbon. Other sail plans are available.

INTERIOR

Winch Design have selected two interior furniture timber choices for the Jeanneau 64:

1) CLASSIC

Furniture: Alpi® Teak with a satin varnish finish
Flooring: Laminate Oak with dark lines machined into laminate

2) CONTEMPORARY

Furniture: Alpi® White Oak with an “open pore” varnish finish
Flooring: Dark Oak

Interior joinery is glued together to eliminate noise while underway

Interior panels are veneered Alpi® with marine ply core

Panels and trim are varnished with a UV-stabilised varnish.

Ceiling panels and hull liner covered in light-coloured vinyl

All interior joinery is produced in house

COMPANIONWAY

STAINLESS STEEL HANDRAILS with leather wrap to each side of steps

ALUMINIUM / WOODEN STEPS with non-skid strips

ENGINE ACCESS behind steps

INDIRECT LIGHTING under each step

MAIN ELECTRICAL PANEL behind smoked Perspex door to starboard of companionway

LOUNGE

DEEP, COMFORTABLE SOFA to port with view of sea through hull ports

LOCKERS ABOVE SEATING

HINGED STORAGE COMPARTMENTS under settee seating

INDIRECT AND OVERHEAD LIGHTING WITH DIMMER SWITCHES

2 LARGE, FIXED HULL PORTS with aviation shades

SALOON

COMFORTABLE SEATING ARRANGEMENT to starboard for 8 with view of sea through hull ports

LOCKERS ABOVE SEATING

HINGED STORAGE COMPARTMENTS under settee seating

LARGE SALOON TABLE

PNEUMATICALLY-ASSISTED HINGED CENTRAL FLOORBOARDS provide access to water systems, bilge sump and generator compartment

COURTESY LIGHTING under steps to forward cabin and galley, as well as other steps throughout the boat

INDIRECT AND OVERHEAD LIGHTING WITH DIMMER SWITCHES

2 LARGE, FIXED HULL PORTS with aviation shades

4 OPENING FLUSH HATCHES in saloon with pleated shade and insect screen integrated into ceiling panels

GALLEY

LARGE GALLEY to port of entryway with Corian® countertop

STAINLESS STEEL GROS SINK with cover

CHROME MIXER TAP with spray nozzle

FOOT PUMP with separate spout, pumps fresh water

DISH DRYING COMPARTMENT with cover and drain

SOFT-CLOSE, FULLY-EXTENDING

DRAWERS with sliders and dampers that close the drawer slowly, silently and softly

SLIDING WASTE BIN under sink

UPPER STORAGE CABINETS

STORAGE CABINETS ALONG HULL with sliding doors

TALL PANTRY CABINET with shelves

FOOD PREPARATION AREA next to the companionway with Corian® countertop, drawers for storage and an upper cabinet

APPLIANCES

- Gas cooker with 3 burners and oven, swivels and can be locked
- Whirlpool Microwave oven with grill function
- Exhaust fan above cooker with light, vented to exterior
- 360 L / 95 US Gal combination fridge / freezer 24V. Fridge compartment with front opening, stainless steel door. 2 stainless steel freezer drawers are located in the lower part of the unit.

LARGE STORAGE DRAWER under galley cooker

STAINLESS STEEL HANDRAIL in front of stove for protection

GALLEY RETURN with integrated, leather-lined tray and bar cabinet. Room for a refrigerated drinks cabinet (option)

1 LARGE, FIXED HULL PORT with aviation shade

OPENING FLUSH HATCH provides ventilation and includes pleated shade and insect screen

COURTESY LIGHTING under steps

NAVIGATION STATION

LARGE CUSHIONED NAVIGATION SEAT with storage compartment underneath.

CHART TABLE WITH LEATHERETTE WORKTOP and details.

LED CHART READING LIGHT

USB PLUGS for recharging portable electronics, as well as, plugs for 220V / 110V

UPPER STORAGE COMPARTMENT

LOCKER UNDER DESK

SPACE PROVIDED FOR FLUSH-MOUNTING chartplotter, VHF and other instrumentation

FORWARD ACCESS DOOR INTO ENGINE ROOM

WET LOCKER

LARGE WET LOCKER with hanging bar, laminate bottom and drain with room for optional washer / dryer unit.

STORAGE CABINET with shelf above wet locker

CABINS

OWNER'S STATEROOM FORWARD

DOUBLE BERTH with High Density foam mattress (205 cm x 180 cm / 6'8" x 5'10")

LARGE, DOUBLE HANGING LOCKER with interior courtesy lighting and 6 storage drawers in lower unit

AN OFFICE / VANITY AREA with leatherette desktop and storage area

COMFORTABLE SOFA

PNEUMATICALLY-ASSISTED OPENING STORAGE CABINETS under side deck

STORAGE CABINET with drawers at forward end of the cabin

COMBINATION LED LAMPS / READING LIGHTS to each side of the berth

NIGHT STANDS to each side of the berth

INDIRECT LIGHTING under upper storage cabinets

2 FIXED HULL PORTS with aviation shades

4 LARGE OPENING DECK HATCHES for light and ventilation with pleated shades and insect screens

2 LARGE STORAGE DRAWERS under berth

LARGE EN-SUITE COMPARTMENT

- Cabinet with solid Teak sink and Corian® countertop
- Lacquered upper storage lockers
- 2 large deck hatches provide light and ventilation with pleated shade and insect screen
- LED overhead lighting and task lighting
- Standing shower separated by a Perspex door and Corian® shower floor
- Electric, fresh-water flush toilet
- Mirror
- Clothes hook
- Towel bar

VIP AFT GUEST CABIN

DOUBLE BERTH (205 cm x 160 cm / 6'8" x 5'2")

HANGING LOCKER with interior courtesy lighting and 3 storage drawers in lower unit

NIGHT STAND to starboard of berth with book shelf

SOFA along hull

LED READING LIGHTS

INDIRECT LIGHTING under side decks to each side

FIXED HULL PORT with aviation shade

LARGE, CURVED OPENING PORT into cockpit for ventilation and evacuation with pleated shade

WASHROOM:

EN-SUITE COMPARTMENTS

- Cabinet with solid Teak sink and Corian® countertop
- Lacquered upper storage lockers
- Forced air ventilation
- LED overhead lighting and task lighting
- Standing shower separated by a Perspex door and Corian® shower floor
- Electric, fresh-water flush toilet
- Mirror
- Clothes hook
- Towel bar

AFT GUEST/CREW CABIN

TWIN BERTHS (205 cm x 68 cm / 6'8" x 26")

HANGING LOCKER with interior courtesy lighting and 3 storage drawers in lower unit

NIGHT STAND between berths

LED READING LIGHTS

INDIRECT LIGHTING under side decks to each side

FIXED HULL PORT with aviation shade

2nd COMPANIONWAY into cockpit for ventilation and evacuation with folding, stainless steel ladder

EN-SUITE WASHROOM COMPARTMENTS

- Cabinet with solid Teak sink and Corian® countertop
- Lacquered upper storage lockers
- Forced air ventilation
- LED overhead lighting and task lighting
- Standing shower separated by a Perspex door and Corian® shower floor
- Electric, fresh-water flush toilet
- Mirror
- Clothes hook
- Towel bar
- Clothes hook
- Towel bar

OWNER'S STATEROOM AFT

DOUBLE BERTH with High Density foam mattress (205 cm x 180 cm / 6'8" x 5'10")

LARGE, DOUBLE HANGING LOCKER with interior courtesy lighting and 6 storage drawers in lower unit

AN OFFICE/VANITY AREA to port with leatherette desktop and storage area and swing-out stool

COMFORTABLE SOFA to starboard

NIGHT STANDS to each side of the berth with storage drawers and upper bookshelves

INDIRECT LIGHTING under side decks to each side with dimmer switches

2 FIXED HULL PORTS with aviation shades

2 LARGE, CURVED OPENING PORTS into cockpit for ventilation and evacuation with pleated shades and insect screens

AFT ACCESS DOOR INTO ENGINE ROOM

LARGE EN-SUITE COMPARTMENT

- Cabinet with solid Teak sink and Corian® countertop
- Lacquered upper storage lockers
- Opening port into cockpit provide ventilation
- LED overhead lighting and task lighting
- Standing shower separated by a Perspex door and Corian® shower floor
- Electric, fresh-water flush toilet
- Mirror
- Clothes hook
- Towel bar

WORKSHOP

(Located between galley and owner's aft stateroom – can also be configured as a day head)

WORKTOP in formica

LARGE STORAGE CABINETS for spares and tools

MULTIPLE 220 V / 110 V PLUGS to recharge power tools

TWIN FORWARD GUEST CABINS

(symmetrical to port and starboard)

DOUBLE BERTH (203 cm x 130 cm / 6'7" x 51")

HANGING LOCKER with interior courtesy lighting and 3 storage drawers in lower unit

LED READING LIGHTS

PNEUMATICALLY-ASSISTED OPENING STORAGE CABINETS under side deck

INDIRECT LIGHTING under upper storage cabinets

2 LARGE STORAGE COMPARTMENTS under berth

2 OPENING DECK HATCHES for light and ventilation with pleated shade and insect screen

FIXED HULL PORT with aviation shade

CABINS

LARGE EN-SUITE WASHROOM forward of cabin

- Cabinet with solid Teak sink and Corian® countertop
- Lacquered upper storage lockers
- Large deck hatch provide light and ventilation with pleated shade and insect screen
- LED overhead lighting and task lighting
- Standing shower separated by a Perspex door and Corian® shower floor
- Electric, fresh-water flush toilet
- Mirror
- Clothes hook
- Towel bar
- Clothes hook
- Towel bar

ACCESS DOOR INTO FORWARD SAIL LOCKER / CREW CABIN (starboard head compartment only)

LATERAL GUEST CABIN

(in place of standard chart table to starboard of companionway)

TWO SINGLE, UPPER AND LOWER BUNKS transformable into a sofa (upper berth 216 cm x 65 cm / 7'1" x 25" lower berth 216 cm x 70 cm / 7'1" x 27")

I LARGE, FIXED HULL PORT with aviation shade

OPENING FLUSH HATCH provides ventilation and includes pleated shade and insect screen

LARGE HANGING AND STORAGE LOCKERS with room for optional washer / dryer unit

FORWARD ACCESS DOOR INTO ENGINE ROOM

SAIL LOCKER FORWARD

ACCESS via lockable deck hatch

ACCESS LADDER

SHELVING ALONG HULL SIDES for storage

ACCESS TO BOW THRUSTER AND TECHNICAL AREAS

LED LIGHTING

HEADROOM

Forward cabin	2,23-2,06 m / 7'4"-6'9"
Master aft cabin	1,93 m / 6'4"
Aft VIP's cabin	1,97 m / 6'6"
Companionway	2,04 m / 6'8"
Galley	2,05 m / 6'9"
Forward head	1,97 m / 6'6"
Aft head	2,00 m / 6'7"
Saloon	1,89 m / 6'2"

GENERATOR

GENERATOR ONAN 7.5 Kw 220 V 1500 RPM in its sound shield and located in a sound-shielded compartment under the main saloon floor; access via pneumatically-assisted hinged floor panels. Includes dedicated starting battery.

ELECTRICAL

In order to accommodate a high-level of standard equipment, as well as optional extras, the Jeanneau 64 uses 3 electrical systems: 24 V for house systems, 12 V for engine systems and 230 V / 115 V shore power and generator systems.

700 VA INVERTER provides 220V / 110V power to on board outlets.

MAIN ELECTRIC PANEL near companionway includes the following:

BACKLIT SWITCHES FOR MAIN HOUSE SYSTEMS, including:

- Lighting
- Refrigeration
- Water pumps
- Bilge pumps
- Waste pumps
- Navigation lights
- Battery switches

DIGITAL DISPLAY 3.5" that displays and controls:

- **AC voltage and AC source selection** (generator or shorepower)
- **Battery monitoring**, DC Voltage levels of each battery bank (24 V and 12 V), charging amperage from alternator or battery charger, amperage consumption meter
- **Tank monitoring, fuel**, water and waste level indicators (per tank)
- **Fuel transfer system**, transfer fuel from reserve tank to main tank

DEDICATED ELECTRICAL CLOSET accessible in aft, port passage centralises electrical functions including 24V **BREAKER PANEL** for high-load equipment

24 V FOR HOUSE SYSTEMS

Battery banks:

- 4 x 210 Ah / 12V Dryfit gel cells (standard)
- 4 x 210 Ah / 12V Dryfit gel cells (optional)
 - option includes second 100 A charger for fast recharging

24V battery charger: 100 A (standard)

Engine alternator: 110 A

220 V OR 110 V PLUGS in each cabin, saloon, chart table and galley

12 V FOR ENGINE SYSTEMS

Battery banks :

- 1 x 50 Ah Dryfit gel starting battery for engine

12V battery charger: 25 A (standard)

Engine alternator: 115 A

USB PLUGS at chart table for recharging mobile devices

ELECTRICAL SWITCHES AT STARBOARD SIDE HELM that allows easy switching from the helm and includes the following functions:

- Navigation lights (engine light is automatic)
- Anchor light
- Deck light
- Spreader lights (option)
- Cockpit courtesy LED lights
- LED lighting in bimini (option)
- Opening and closing of swim platform

LED INTERIOR LIGHTING

DIMMER SWITCHES for overhead and indirect lighting in saloon and cabins

COURTESY LIGHTING under steps and in cockpit

PLUMBING

FRESH WATER

FRESH WATER SYSTEM with high-pressure twin 24 V pumps (36 L / min / 9.5 US gal / min), inline filter and accumulator tank

SEA WATER AND FRESH WATER FOOT PUMP in the galley

SHORE WATER CONNECTION in cockpit with water pressure regulator

3 ROTO MOULDED WATER TANKS 2 x 400 L / 106 US gal tanks and 1 x 200 L / 53 US gal tank with separate fills and vents

TANK MANIFOLD with selector valves located under saloon floor

TANK LEVEL GAUGES integrated into 3.5" digital display panel at companionway

80 L / 21 US GAL HOT WATER HEATER connected to engine heat exchanger and 230 V / 115 V electrical system

HOT AND COLD WATER SHOWER at the transom in the garage

SINK in galley console in the cockpit with cold water tap (option)

GREY WATER

COLLECTOR SYSTEM at each head compartment centralises sink and shower grey water for overboard discharge. This reduces the number of through hulls

WASTE WATER

3 ELECTRICAL MARINE TOILETS with fresh water flush

3 ROTO MOULDED HOLDING TANKS 88 L / 23 US Gal located under floor in forward and aft section with overboard macerator pump and level gauges integrated into 3.5" display panel at companionway

NON-SMELL WHITE PVC HOISING

BILGE DRAINAGE

EACH BILGE PUMP HAS SEPARATE HOISING from sump to through-hull

- Electric bilge pump located in bilge sump area with activation via switch at electrical panel
- Dual-action manual bilge pump located in the cockpit
- Electric bilge pump located in forward sail locker.

ENGINE & THRUSTER

Volvo D4- I80

- 180 HP / 132 kW
- 4-cylinder, 16-valve
- Common rail fuel injection
- Hydraulic gearbox, ratio 2:48
- 2 Engine alternators
- 24V 110 A
- 12V 115 A
- EVC (Electronic Vessel Control) panel and 4" display located on starboard-side helm console
- Keyless ignition system
- Electronic, single lever engine throttle/shifter installed on starboard-side helm console

SOUND INSULATION

GRP ENGINE BED AND LINER

DRIPLESS SHAFT GLAD with water lubrication

STAINLESS STEEL SHAFT 40 mm with bronze strut

4-BLADE FLEX-O-FOLD FOLDING PROPELLER

EXHAUST SYSTEM

- Stainless steel exhaust mixer
- Stainless steel exhaust fitting on hull

VENTILATION SYSTEM

- Extractor fans located in engine room for maximum sound deadening
- Ventilation ducting vents exit in coaming

FUEL SYSTEM

- Primary tank: Stainless steel tank (500 L / 132 US gal) with pick-up and return fittings located under main saloon
- Secondary tank: roto moulded tank (325 L / 86 US gal) with transfer pump to primary tank
- Inline fuel/water separator with electronic sensor for water
- Fuel gauge at electrical panel

BOW THRUSTER 24 V with 240 kg / 529 lbs of thrust mounted in 250 mm / 10" tunnel with dedicated 24V battery bank

SAFETY & STANDARDS

Peace of mind is part of the Jeanneau experience, which is why safety is standard. We conduct extensive finite element analysis of our structural systems, design secure handholds throughout, utilize large hatches that double as emergency egress routes, and only use the highest quality deck fittings. This helps create the legendary Jeanneau seaworthiness that comes with 60 years of experience in building offshore boats.

CURVED ESCAPE HATCHES are located in the aft cabin(s) and allow the evacuation of aft cabins without passing engine or galley spaces

13 ESCAPE HATCHES throughout the interior

NOVEC™ AUTOMATIC ENGINE ROOM FIRE-EXTINGUISH SYSTEM with release handles located under galley steps

EMERGENCY TILLER fitting easily accessible due to the twin-helm / single rudder design

FOLDING PADEYES in cockpit and along side deck for safety harnesses

MANUAL BILGE PUMP with located at helm station with hosing separate from electric bilge pumps

EMERGENCY LADDER located on transom aides in the rapid recovery of a man overboard

RECEIVES CATEGORY A "unlimited ocean" rating by the European Community (CE)

Jeanneau enjoys ENVIRONNEMENT & QUALITE CERTIFICATION (AFAQ ISO 50001 / AFAQ ISO 9001 / AFAQ ISO 14001)

ENTERTAINMENT

ENTERTAINMENT CENTRE for main saloon

- Fusion DVD / CD / MP3 AV700 player with AUX input
- 2 Bose® surround sound speakers in the saloon
- 1 Bose® base unit
- 2 waterproof BOSE exterior speakers located in the cockpit

MISCELLANEOUS

2 WINCH HANDLES

OWNER'S MANUAL

MANUALS from other equipment delivered on board

OWNER'S BAG

WARRANTY

On Jeanneau 64, the yard offers a seven-year warranty on hull and deck structure, five-year warranty "osmosis" and a three-year warranty parts and labor. Our network of suppliers and dealers world-wide provides an unmatched level of service.



JEANNEAU
YACHTS



SPBI JEANNEAU - 32 Avenue des Sables - CS 30529 - 85505 LES HERBIERS CEDEX - FRANCE - TEL +33 (0)2 51 64 20 20 - FAX +33 (0)2 51 67 37 65
INTERNET : <http://www.jeanneau.com>