

DEB

Y A C H T S



JEANNEAU





Jeanneau has created a new **premium vision of the Day Boat**. The first model in the DB Yachts line, the DB/43 illustrates Jeanneau's creative capacity and quest for innovation, all while drawing on the savoir-faire and heritage of the brand.

This year, Jeanneau expands the DB Yachts line **with a second model: the new DB/37**. Jeanneau reaffirms its ambition to develop the market of premium day boats by meeting the expected codes in this segment while **offering unexpected solutions**.



MORE



THAN

Faithful to Jeanneau's heritage, DB Yachts presents unprecedented solutions to maximize your enjoyment on board.

With **its exclusive style, polished finish, and unequalled capacity for entertaining**, DB Yachts go far beyond the expected features and functions of a day boat.

From day boat, to party boat, to cruiser, DB Yachts
promises exceptional experiences on the water.

YOU



EXPECT



A photograph showing the interior of a yacht cabin. The view is from a window looking out at a blue sea under a clear sky. Below the window is a wooden countertop with two metallic cylindrical containers. Underneath the counter is a wooden cabinet with a silver handle. A portion of a light-colored upholstered seat is visible in the bottom left corner.

A UNIQUE OFFER

A true party boat, with an optimal interior layout, the DB Yachts line offers the possibility of extended stays onboard... all of this with the stylish allure of elegant lines.

MORE STYLE



Entrusted to Italian designer, Camillo Garroni, the DB/43 offers a **streamlined design, unique character, and contemporary style.**

In all aspects, this model demonstrates **power, elegance, and harmony.**



Benefiting from all the savoir-faire and creativity of Jeanneau, **the DB/37 features a streamlined silhouette** designed by Camillo Garroni, with a distinctive personality.

Subtly Distinguished





MORE

OPEN



The DB/43 benefits from an **airy deck plan, that's open to the sea**. Together **the aft swim platform and two opening side terraces** enable you to create a true Beach Club environment with privileged access to the sea for swimming.

With its clever, open layout, the DB/43 is designed for enjoying shared moments with full **comfort on board**.

This new DB/37 perfectly represents the DB Yachts line, upholding the core principles that made the DB/43 a success. **The deck plan focuses on exterior living and easy movement on board**, and while at anchor, side terraces can extend the cockpit toward the sea.

Experience complete freedom





MORE



You will appreciate the **large, fully equipped central island exterior galley**. Its large Corian countertop becomes a gathering place for enjoying refreshments, meal preparation, and special moments together.

INGENIOUS





DB Yachts aft cockpit has a modular layout, perfect for entertaining. **The sliding central cockpit bench** enables you to create **facing seating** around the table for sharing special moments.

All on one level, the immense exterior living space fully opens onto the sea. The forward cockpit is easily accessible for taking advantage of the sun loungers on the forward sundeck.





MORE

POWER

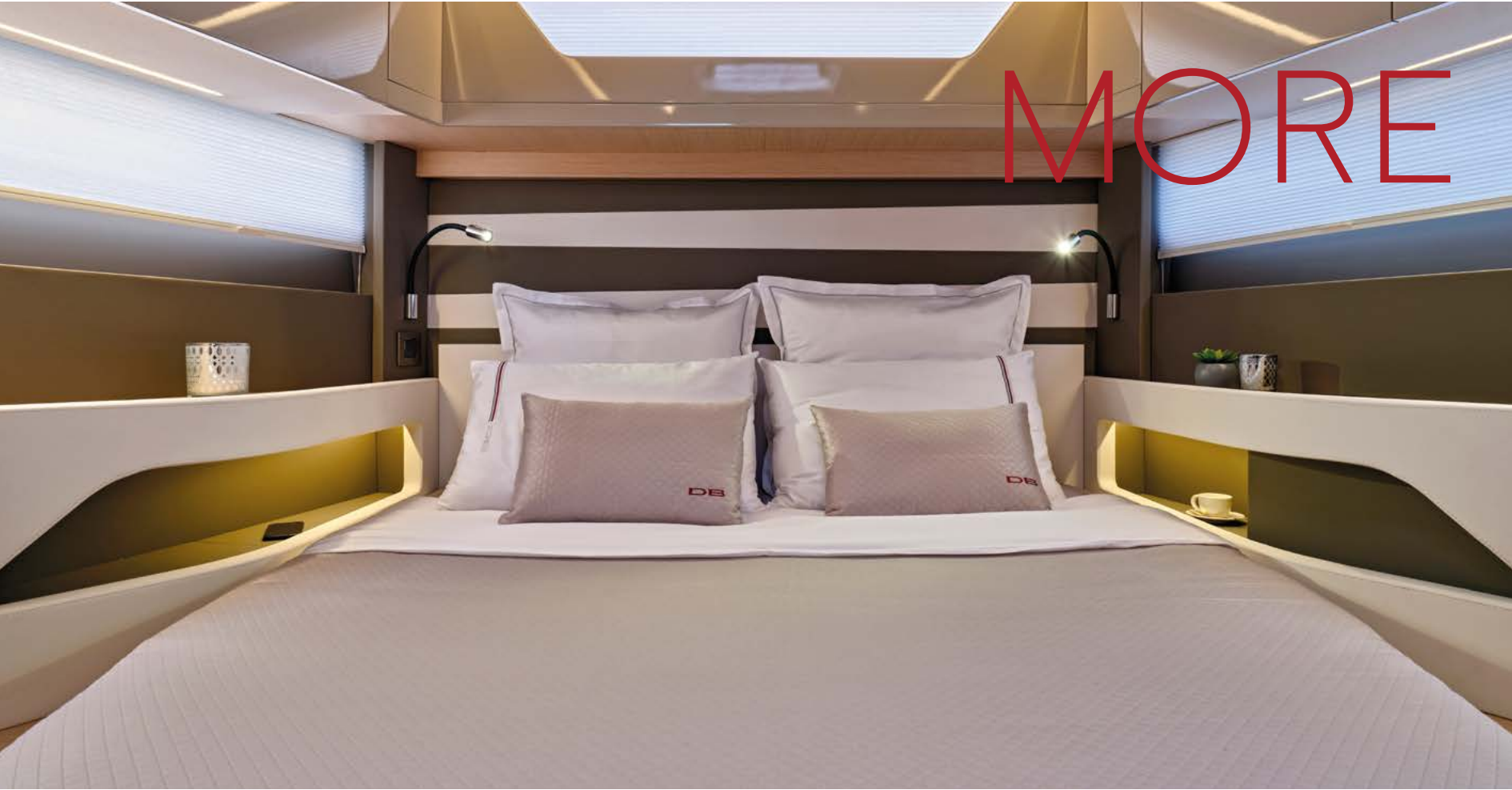


With a hull design by Michael Peters Yacht Design, the DB Yachts line demonstrates excellent seakeeping. **Responsive, powerful, and stable.**

The DB/43 is offered in an **inboard version**, with twin Volvo D6-380 engines, and an **outboard version**, with triple 350 HP engines.

The DB/37 is available in an **inboard version**, with twin Volvo D4-320 engines and Sterndrive, as well as an **outboard version** with engine power of up to 2 x 450 HP.

MORE



COMFORT

The interior atmosphere aboard the DB/43 in White Oak **is warm and well appointed**, enhanced by fine materials, indirect lighting, and particular attention to detail in fit and finish. Wide openings ensure an **exceptionally bright interior with optimal ventilation**.



The interior of the DB/37 fulfils all the promises of the DB Yachts line, with refined touches, fine materials, thoughtful details, and a warm atmosphere, **all enhanced by natural lighting diffused through vast windows in the hull**.





Set course for the essential

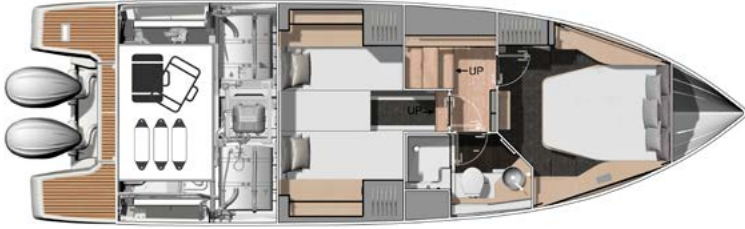
Much more than a day boat, DB Yachts invite you to extend your cruise, with the promise of enjoying your time on the water in the most comfortable conditions.



DB/37 INBOARD

PRELIMINARY TECHNICAL SPECIFICATIONS

LOA.....	39' 1"
Beam.....	11' 8"
Beam Terraces Open.....	16' 1"
Hull draft.....	2' 9"
Draft.....	3' 10"
Deadrise.....	20°
Bridge Clearance.....	13' 10" - 15' 1"
Cabins.....	2
Berths.....	4
Heads.....	1
Fresh water tank.....	66 US Gal
Holding tank.....	21 US Gal
Grey water tank.....	24 US Gal
Engine Power.....	Volvo 2 x D4-320 HP
Fuel Capacity.....	2 x 106 US Gal
Air conditioning cabins.....	8,000 BTU front cabin
.....	8,000 BTU aft cabin
Dry weight.....	18,073 lbs
Dry weight fully equipped water ready.....	28,576 lbs
Designer.....	Garroni Design
Architect.....	Michael Peters
CE Certification.....	XXX



DB/37 OUTBOARD

PRELIMINARY TECHNICAL SPECIFICATIONS

LOA engines up.....	40' 4"
Beam.....	11' 8"
Beam Terraces Open.....	16' 1"
Draft engines up.....	2' 8"
Draft engines down.....	XXX'
Deadrise.....	20°
Bridge Clearance.....	13' 10" - 15' 1"
Cabins.....	2
Berths.....	4
Heads.....	1
Fresh water tank.....	66 US Gal
Holding tank.....	21 US Gal
Grey water tank.....	24 US Gal
Engine Power.....	Yamaha 2 x 450 HP XTO + Joystick
Fuel Capacity.....	2 x 132 US Gal
Diesel generator tank.....	13 US Gal
Air conditioning cabins.....	8,000 BTU front cabin
.....	8,000 BTU aft cabin
Dry weight with engines.....	16,750 lbs
Dry weight fully equipped water ready.....	25,586 lbs
Designer.....	Garroni Design
Architect.....	Michael Peters
CE Certification.....	XX



DB/37 North American Standard + Options

North American Standard (NAS)

- SEANAPPS: Connect Your Boat, Free Your Mind
- 2 fold down electric swim terraces (port & starboard)
- Anchoring Kit with stainless steel anchor
- Windlass control with chain counter at the helm station
- Stainless steel bow protection
- Removable swim ladder for lateral terrace
- Movable backrest of the sliding cockpit bench
- Tilting backrest of the aft bench (traverse sunbed)
- Set of white cover for: helm station, 3 sets - pilot + copilots, cockpit galley and cockpit benches
- Front sunpad cushions with face to face seating
- Bow thruster
- Deckwashing electric pump (sea and fresh water)
- Shore power 110V
- Water heater 110V
- Generator 6.4KVA 110V 60 diesel Fischer Panda + 13 gallon diesel tank
- 2 aft cockpit spotlights
- Exterior electric grill + vitroceramic induction cooktip 110V60HZ
- A/C for front cabin and head (8K BTU) + aft cabin and helm (8K BTU)
- 1 additional battery 12V 140A AGM
- Lenco electric trim tabs
- Interior smoke detectors

Premium audio package:

- FUSION audio system Apollo WB675 and Apollo ERX400 with 2 amplifiers, 6 speakers (2 front cockpit, 3 aft cockpit), 1 subwoofer (aft cockpit), 2 tweeters at the helm station

Ambiance Pack:

- LED lighting for exterior steps
- LED string in the cockpit galley
- Indirect LED lighting interior

Ventilation Pack:

- Deck hatch in front cabin
- 2nd porthole on starboard in the front cabin
- 2nd Porthole in the bathroom

Comfort Pack:

- Direct plug for fresh water at the dock
- Leather-covered cockpit handrails
- Venetian blinds in the aft cabin, in lieu of curtains
- 2 retractable ambient lights in the cockpit galley
- 2 multicolor underwater lights
- TV antenna
- Prefit for TV 115V 60HZ in the cockpit
- Prefit for TV 115V 60HZ in the front cabin

Propulsion

- Yamaha 2 x 450 HP XTO + Joystick
- 2 x Volvo D4 - 320 HP + Joystick

Layout Versions

- 2 Cabins - 1 Head - 1 Breakfast point

Exterior Upholstery

- Ice Silvertex Blue (NAS)

Interior Woodwork

- White Oak interior finishes with dark brown flooring

Electronics Options

Upgraded Electronic Package Raymarine:

- 2 screens AXIOM+ 12 Rv
- Transducer CPTS
- Wifi connectivity for control from a tablet or smartphone
- Navionics cartography included
- Engines information display

Hull/Deck Equipment Options

- Aft sun awning (fixed) graphite
- Aft electrical sun awning sureshade
- Sunshade for aft cockpit on poles - sunworker charcoal (made of microperforated canvas, with 2 removeable carbon poles)
- Sunshade for front cockpit on poles - sunworker charcoal (made of microperforated canvas, with 2 removeable carbon poles)
- Wood cockpit table with fixed stainless steel legs + cover
- Wood cockpit table with telescopic legs for sundeck
- Mooring kit: set of 6 fenders and 4 lines

Eisenglass Kit - Sidedecks + Galley in graphite

- Closing canvas for sidedeck portside + starboard
- Closing canvas behind the cockpit galley
- Fabric sunbrella graphite

Eisenglass Kit - Full Cockpit in graphite

- Aft cockpit sun awning
- Closing canvas for sidedeck portside + starboard
- Closing canvas behind the cockpit

- Fabric sunbrella graphite

Aft platforms

- Cockpit shower hot/cold water
- Built-in stainless steel ladder

Exterior Options

- Teak on sidedecks and front cockpit floor
- Teak in aft cockpit and aft and side platforms
- Extra filler cushion for front sunpad ice blue (includes support frame in lacquered aluminium,

cushion)

- Exterior removable cockpit carpets infinity

Interior Options

- Bedding set Mona Lison for the 2 cabins (includes pillows, comforters, bed covers and bedding for 2 cabins)
- Removable carpet set for the interior

Master Cabin

- Double bed (200 cm x 152 cm)
- Premium mattress
- Stand-up mirror
- 2 reading lights with integrated USB plugs
- Electric Plug
- Blind
- Vanity
- 2 opening portholes
- Wardrobe
- Compartment

VIP Cabin

- 2 single beds (6' 5" x 2' 6") or transverse double bed (7' x 4' 8") with filler cushion
- 2 Wardrobes
- Storage
- 2 reading lights with integrated USB plugs
- Electric Plug
- 2 opening portholes

Bathroom

- Separated shower
- Electrical fresh water toilet
- Sink
- Mirror
- Vanity unit with storage
- Venetian blind
- Toilet paper holder
- Soap holder
- 2 opening portholes

Helm Station

- 3 adjustable bolster seats for pilot and co-pilots
- Sportop opening hatch
- Adjustable steering wheel
- Glovebox with USB plugs
- Cup holders
- Handrails
- 2 adjustable air conditioning outputs (option)

Additional Equipment Options

- Gyroscopic stabilizer Seakeeper SK3 on generator (factory installed - includes comprehensive structural integration, Seakeeper factory certified installation)
- Deck searchlights
- 2 Fictitious satellite antennas
- Raymarine radar open array cyclone

- Raymarine quantum 2 digital radar
- AIS 700 transponder Raymarine
- VHF Raymarine ray90
- Upgraded automatic trim tabs Zipwake
- Auto flush system for outboard engines
- Inverter 12-115V 60HZ 2000W

Cockpit

- Large folding wooden table with cup holders on fixed legs (option)
- Large folding wooden table with cupholders on telescopic legs, with optional aft sunbed (option)
- Face to face central bench with folding backrest
- Face to face aft bench with folding sunbed backrest
- Storage compartment under the sunbed
- Storage compartment under the central bench
- Exterior shower
- 2 stainless steel access gates

Front cockpit / sunpad

- Anchor locker with chain compartment
- Face to face cockpit (option)

Exterior Galley

- Sink
- Gas plancha
- Gas stove
- Fridge 13 Gal
- Storage cupboard
- Corian worktop
- 2 electric plugs
- 2 USB plugs
- 2 Cup holders
- Bin
- Handrails

Breakfast Point

- Microwave oven / grill (option)
- Fridge 13 Gal (option)
- Storage
- Drawers

Electrical system

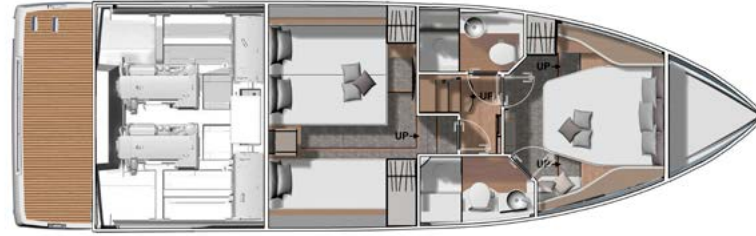
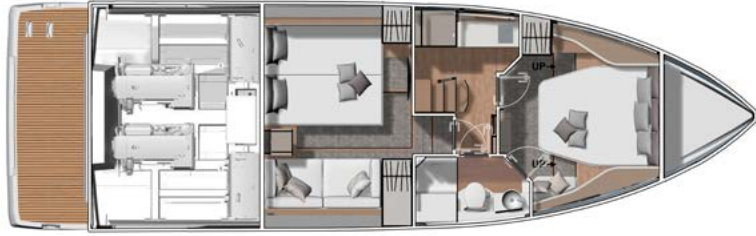
- Battery bank 12V - Engine
- Battery bank 12V 140A AGM - House
- Remote battery switch
- Battery coupling switch

Fuel system

- Fuel tanks IB 2 x 91 Gal
- Fuel tanks OB 2 x 127 Gal OB

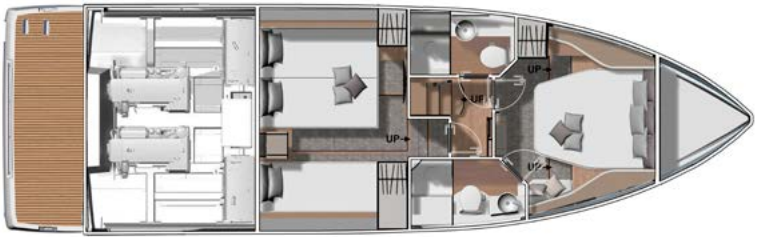
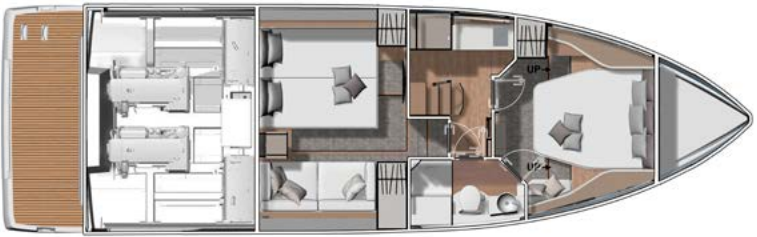
Water system

- Fresh water tank - 66 Gal
- Grey water tank - 21 Gal
- Water heater - 10.5 Gal
- Manual and automatic bilge pumps with alarm



DB/43 INBOARD

LOA.....	42' 10"
Beam.....	12' 6"
Beam Terraces Open.....	18' 7"
Draft engine up.....	3' 1"
Draft engine down.....	3' 3"
Deadrise.....	19.5°
Bridge Clearance.....	11' 2" - 16' 3"
Cabins.....	2
Berths.....	4 / 5
Heads.....	1 / 2
Fresh water tank.....	66 US Gal
Holding tank.....	32 US Gal
Grey water tank.....	96.5 US Gal
Engine Power.....	Volvo 2 x D6-380 HP + Joystick
Fuel Capacity.....	2 x 106 US Gal
Air conditioning cockpit.....	12,000 BTU
Air conditioning cabins.....	12,000 BTU front cabin
.....	8,000 BTU aft cabin
Dry weight.....	22,130 lbs
Dry weight fully equipped water ready.....	28,576 lbs
Designer.....	Garroni Design
Architect.....	Michael Peters
CE Certification.....	B10 / C12



DB/43 OUTBOARD

LOA engines up.....	44' 5"
Beam.....	12' 6"
Beam Terraces Open.....	18' 7"
Draft engine up.....	2' 8"
Draft engine down.....	3' 10"
Deadrise	19.5°
Bridge Clearance.....	11' 2" - 16' 3"
Cabins.....	2
Berths.....	4 / 5
Heads.....	1 / 2
Fresh water tank.....	66 US Gal
Holding tank.....	32 US Gal
Grey water tank.....	96.5 US Gal
Engine Power.....	Mercury 3 x 350 HP Verado + Joystick
Fuel Capacity.....	342 US Gal
Diesel generator tank.....	13 US Gal
Air conditioning cockpit.....	12,000 BTU
Air conditioning cabins.....	12,000 BTU front cabin 8,000 BTU aft cabin
Dry weight with engines.....	21,716 lbs
Dry weight fully equipped water ready.....	28,500 lbs
Designer	Garroni Design
Architect.....	Michael Peters
CE Certification.....	B10 / C12



DB/43 North American Standard + Options

North American Standard

- Stainless steel bow protection
- Electric sunroof
- 2 electrical side terraces
- Electric flaps
- 2 cockpit spotlights
- 2 Venetian blinds in the aft cabin
- Microwave oven / grill
- Exterior galley veroceramic induction cooktop
- Electric grill
- Integrated coffee machine
- Master cabin vanity/ bar furniture (option)
- Forward cockpit sunpad cushions
- Ship Control - Monitoring and control system connected to navigation screens
- Seanapps: connected box + mobile application for monitoring safety, navigation data, maintenance and comfort on board
- Bow thruster
- Stainless steel Anchor kit
- Interior air conditioning
- Diesel Generator 13 Gal Tank (OB Version)
- Electric flaps
- Automatic outboard flushing system (OB Version)

Comfort package:

- Front cockpit table with cover
- Multi-functions steering wheel
- 4 multicolor underwater lights
- 43" TV in cockpit
- 32" TV in front cabin
- 32" TV in aft cabin
- Fusion audio system front cabin, 2 speakers

Ventilation package:

- Deck hatch in front cabin
- 2nd porthole on starboard in the front cabin
- 2nd Porthole in the bathroom
- Shore power with automatic retractable reel
- Helm station porthole

Atmosphere package:

- LED lighting for exterior steps
- LED string in the cockpit galley
- Indirect LED lighting interior

Premium audio package:

- FUSION AUDIO SYSTEM Apollo 670 digitally integrated: 1 amplifier + 6 speakers (2 front cockpit, 4 aft cockpit) + 2 subwoofers (aft cockpit starboard and portside) + 2 tweeters at the helm station

Layout Versions

- 2 Cabins - 1 Head - 1 Breakfast point
- 2 Cabins - 2 Heads

Exterior Upholstery

- Ice Silvertex Blue

Woodwork

- White oak
- Brown oak floor

Interior Upholstery

- Beige leather
- Leather : choice of color (option)

Electronic Packages

- **Electronic package US including:** Two 16" Screens Raymarine Axiom, Transducer Raymarine P79
- **Upgraded electronic package US including:** VHF Raymarine RAY90, AIS 700 Raymarine Transponder
- Raymarine augmented reality clearcruise
- Raymarine radar open array with searchlight
- Raymarine radar quantum 2 with searchlight
- TV antenna

Aft Platform

- Swim platform around engines
- Cockpit shower hot/cold water
- Built-in stainless steel ladder

Master Cabin

- Double bed (6'6" x 5'4")
- Premium mattress
- Storage drawer under the bed
- Lacquered high storage on starboard and port-side
- Wardrobe with stand-up mirror
- 2 reading lights with integrated USB plugs
- Electric Plug
- Blind
- Seat with integrated storage
- Private access to the starboard bathroom
- 2 opening portholes

VIP Cabin

- Double bed (6'5" x 5'4")
- Simple bed or sofa (2'7" x 6'5")
- Bedside table with storage
- 2 Wardrobes
- Large storage space under the beds
- 3 reading lights with integrated USB plugs
- Electric Plug
- 2 opening portholes

Bathroom

- Separated shower with corian floor
- Electrical fresh water toilet
- Sink
- Mirror
- Vanity unit with storage
- Venetian blind
- Toilet paper holder
- Soap holder
- 2 opening portholes

Helm Station

- 3 adjustable bolster seats for pilot and co-pilots
- Adjustable steering wheel
- Glovebox with USB plugs
- Cup holders
- Handrails
- Storage under the pilot seat
- 2 adjustable air conditioning outputs (option)
- Eisenglass enclosure for side and galley (option)
- Side boarding gate on starboard

Cockpit

- Large folding wooden table with cup holders
- Synthetic Teak (option)
- Dual facing benches with tilting backrests
- 2 electric side terraces with a removable bathing ladder
- Electrically opening storage compartment under the sunpad
- Storage compartments under the benches
- Exterior shower
- LED lighting for exterior steps
- Eisenglass enclosure for full aft cockpit (option)
- 2 stainless steel boarding gates

Front Cockpit / Sunpad

- Anchor locker with separated chain compartment
- Electric windlass
- Storage for fenders with hanging rail
- Handrails
- Vis-à-vis cockpit seating (option)
- Cockpit table with cup holders (comfort pack)

Exterior Galley

- Sink
- Fridge 17 Gal
- Drawers and storage cupboard
- Corian worktop
- 2 electric plugs
- 2 USB plugs
- 2 Cup holders
- Bin

- Icemaker (option)
- Handrails

Breakfast Point - depending on layout version

- Stainless steel sink with mixer tap
- Fridge 20 Gal (option)
- Bottle rack
- Corian worktop
- Lacquered storage furniture
- Underfloor storage
- Pot drawer / drawers under the companionway
- Bin

Propulsion

- 2 x Volvo D6 - 380 HP Joystick
- 3 x Mercury Verado 350 HP Joystick
- Automatic Trim Tabs ZIPWAKE (option)

Systems

- Cockpit air conditioning (option)
- Automatic fire extinguisher in the engine room
- Gyroscopic stabilizer (seakeeper SK3)
- Interior smoke detectors

Electrical System

- Battery bank 12V - Engine
- Battery bank 12V 140A AGM - Service
- Remote battery switch
- Battery coupling switch
- LED interior lighting with dimmers
- Exterior LED lighting
- Dock electric inlet 220 V recessed under cover

Fuel System

- Fuel tanks IB: Diesel 2 x 105 Gal
- Fuel tanks OB: 3 x 113 Gal
- Deck fuel fillers in the cockpit

Water System

- Fresh water tank - 66 Gal
- Grey water tank - 12 Gal
- Water heater - 11 Gal
- Manual and automatic bilge pumps with alarm
- Freshwater and seawater electric deck wash pump
- Dock water inlet with regulator
- Holding tank 32 Gal





OB/43

SURY



DB
YACHTS

GET ON BOARD

