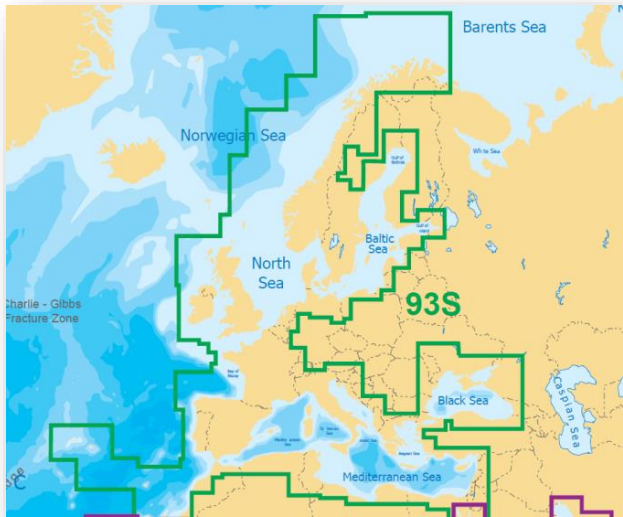
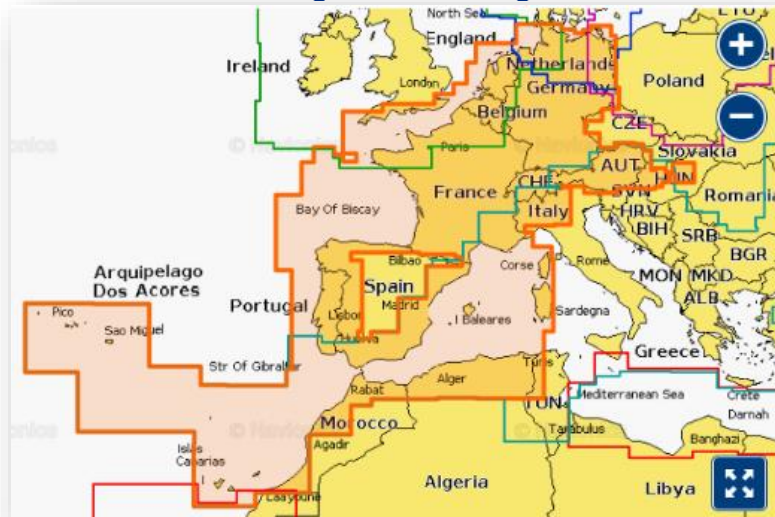


Navionics Silver EU Europe region



Preloaded Europe zone map with bathymetry available up to the 10 meters depth line but not beyond and the SonarChart™ and Dock to Dock functions are not available.

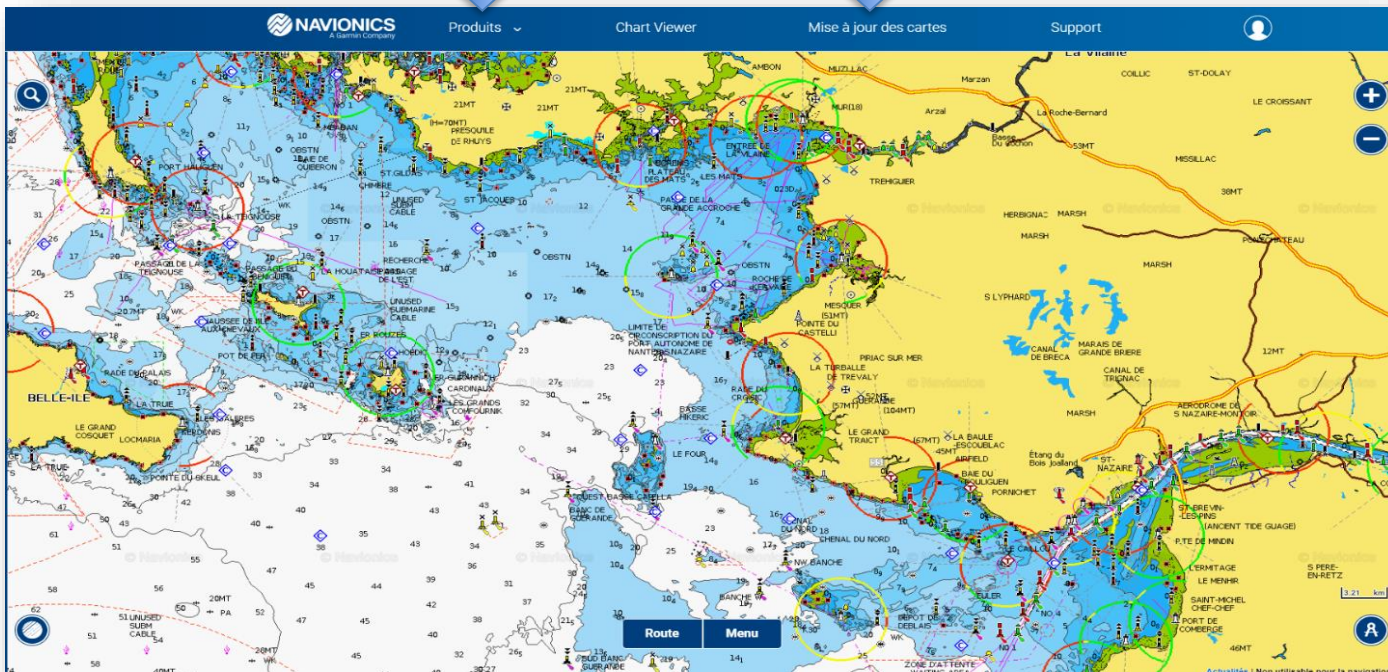
Navionics + Selecting a LARGE area in a global coverage



Media card to load on a PC, select a LARGE area mapping with high definition bathymetry. Free download for 12 months of updates with the Freshest Data service and Dock to Dock function.

Chart reference + coverage

Registering the card and downloading map contents and updates



Navionics +
Selecting a
LARGE area
in a global
coverage