

JEANNEAU

51



S U M M A R Y

- > SPECIFICATIONS
- > KEY POINTS
- > EXTERIOR
- > INTERIOR
- > SAILS
- > CONSTRUCTION
- > AMBIANCES
- > PACKS
- > ELECTRONIC PACKAGES
- > AST OPTION



JEANNEAU
YACHTS



TECHNICAL INFORMATION

Overall length: 15.38 m / 50' 5"
Hull length: 14.98 m / 49' 1"
Waterline length: 13.95 m / 45' 9"
Beam: 4.70 m / 15' 5"

Displacement: 14 400 kg / 31 747 lbs
Standard keel draft: 2.28 m / 7' 5"
Shoal keel draft: 1.73 m / 5' 8"

Cabins: 2 / 3
Berths: 4 / 5 / 6 (+2)

Engine power: 80 Hp / 58 kW
110 Hp / 81 kW

Fuel capacity: 240 l / 63 US gal
..... OPT 480 l / 127 US gal
Water capacity: 640 l / 169 US gal

Cold capacity: 130 l / 34 US gal

Sail area:
- Standard 107 m² / 1 151 Sq ft

CE Category: A12 / B14 / C16 / D16

Designers: Philippe Briand Yacht Design
Winch Design

VERSIONS • LAYOUTS

Fixed keel version
Shoal draft version

2 cabins / 2 heads / workshop + utility room
2 cabins / 2 heads / skipper cabin
3 cabins / 2 heads / workshop
3 cabins / 3 heads

- **Performance sails:**

- > STOP Mylar-Taffetas
- > NEW Aramid Sport Lite Skin®, Triradiale cut

- **Creation of Performance:**

- > Creation of the « Performance » logo
- > Performance sails
- > Dyneema textile lifelines

- **New bowsprit and anchor roller:** in PREMIERE trim level

- **New choice of cockpit cushion** with a more natural fabric look

- > STOP Sunbrella Natté « Cadet Grey »
- > NEW Bora Bora « Grey »

- **Higher quality of leather:**

- > STOP "SOFIC"
- > NEW "FOGGLIZZO"
- > 3 referenced leathers: Duke 01 White / Duke 02 Chocolat / Duke 26 Blue Night
- > 2 referenced nubucks: Lugano 02 Mastic / Lugano 10 Saphir

- **Bed and bath linens MONA LISON:** one pack per layout

ENTER A WORLD OF LUXURY AND COMFORT!

Every aspect is innovative and designed to fit the way you live like no other boat in its class. Every detail and feature has been conceived to improve the life onboard and the cruising experience.

EXTERIOR

Arrangements very well thought-out with the aim of favoring ease of navigation:

- Multizone cockpit
- Innovative patented aft terrace
- Dedicated living spaces for relaxing, socialising and sailing

Association of performance and design:

- Design by Philippe Briand



INTERIOR

An interior with contemporary design and ergonomic to enhance your comfort while sailing:

- Design by Andrew Winch
- The noblest materials were carefully selected: high-quality leather, choice of woodwork, stainless equipment, wide choice of fabrics
- Numerous storage spaces
- Technical spaces designed for passagemaking
- A selection of interior wood finishes and ambiances, as seen aboard the Jeanneau 64

STANDARD



Alpi® Teak



Oak laminate

OPTION



Alpi® White Oak



Dark oak

Superior level of comfort:

- Owner cabin
- VIP interior layout
- Versatile aft starboard accommodation: 3rd cabin with double berth, utility room, workshop, skipper cabin...
- Spacious cabins with well-kept finishes, equipped galley, luxurious saloon convertible in relaxing space

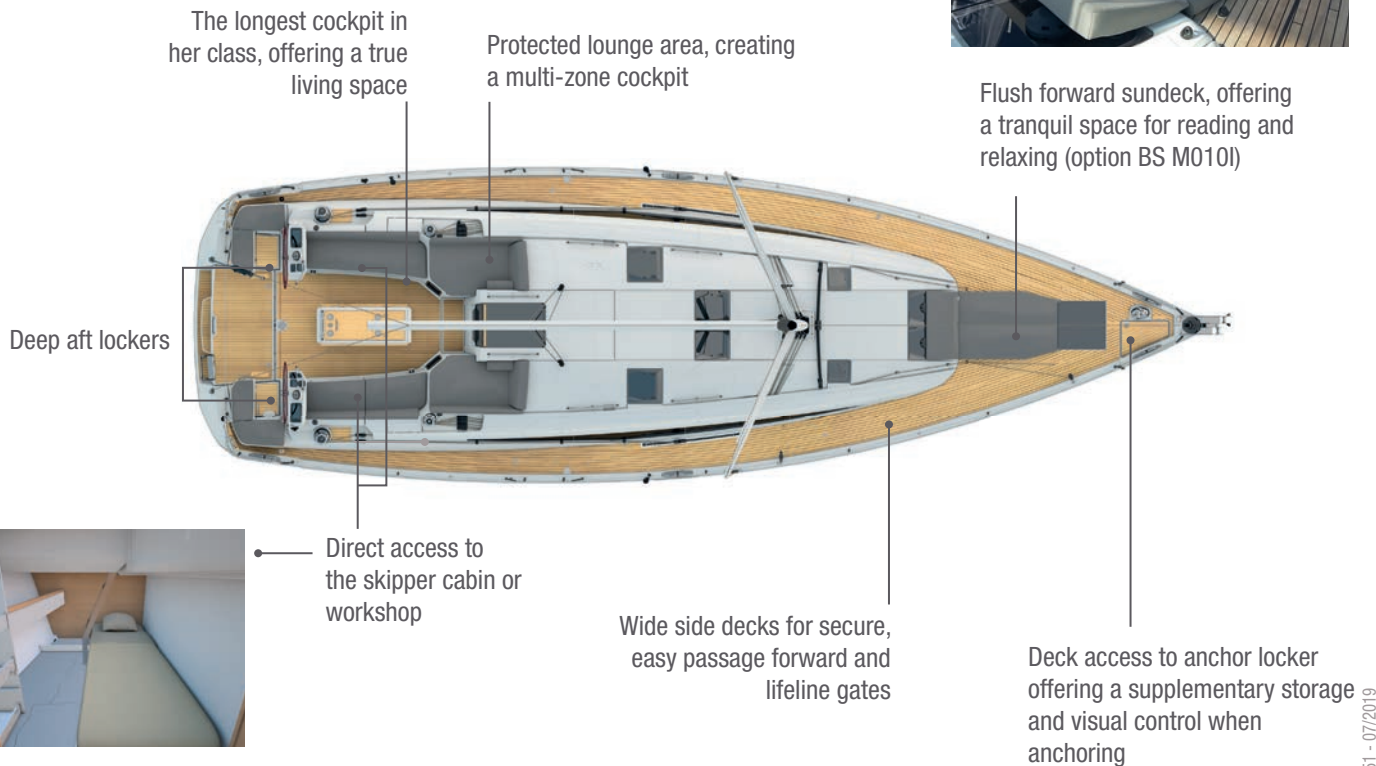
WELCOME TO THE WORLD OF JEANNEAU YACHTS!

DESIGN

- 1** Single rudder: less drag and more sensation. Thanks to a good ratio between beam and length, the hull is perfectly balanced with a single rudder
- 2** Modern rigging with 110 % genoa and furling mast as standard
- 3** Hard chinned hull developing good inside volume and sailing stability
- 4** Long and elegant roof with lot of window surface
- 5** Large hull ports
- 6** L-shaped Keel



DECK



Inclined armchairs with cup holders offering an exceptional view and comfort with sun protection of the sprayhood



New bowsprit and new anchor roller available in the PREMIERE Trim level

Sliding companionway hatch facilitating passage and storage



A “safety first” conception ensuring easy deployment of the liferaft at the end of the table without necessity of opening the transom

DECK

- Standard polyester cockpit table



- Folding cockpit table with wooden leaves (option BE T04)



DECK

Twin steering wheels



Retractable davits allowing launching of a big dinghy without taking inside space. They disappear when are not in use.

Primary winches are accessible from the helm station for easy trimming of the sails. Halyard winches are placed on the coamings, not to interfere with relaxing zones



GPS integrated into a pod

STANDARD TRANSOM OR TERRACE

STANDARD VERSION



Opening storage locker

OPTIONAL VERSION

Sundeck cushions are stored within the terrace



Wide, angled swim ladder with handrails, for the finest sea access in her class

Both versions are compatible with davits and gangway

TRANSOM - TERRACE OPTION

OPTIONAL VERSION



VARIOUS OPTIONS



Fold-up helm seats - option BE A15



Bimini with integrated LED lighting - option BE I0440



Electric primary winches -
option AU W13



Boarding ladders at side gates - option BE E01

INTERIOR LAYOUTS

2 cabins version / 2 heads - standard with workshop and storage room



2 cabins version / 2 heads - skipper cabin + head



3 cabins version / 2 heads - storage and utility rooms



3 cabins version / 3 heads



BIG SALOON



BIG SALOON - VARIOUS OPTIONS

Retractable LED TV 32" in the saloon - option RH 32F7R



CHART TABLE

Large chart table with storage under seat



U-SHAPED GALLEY - FULLY FUNCTIONAL AND OPEN TO THE SALOON



Fold-down countertop over
the stove and oven unit

Additional 75L fridge drawer
in the galley (option IA C04)



Microwave
(option IA F035)



Fridge



Dishwasher
(option)



J51 - 07/2019

U-SHAPED GALLEY - FULLY FUNCTIONAL AND OPEN TO THE SALOON (continued)

Galley open to the saloon

High quality
countertop



3-burner stovetop with
thermostatic oven (optional)

Numerous and practical storage
compartments



Soft-closing drawers



Exceptional storage compartments with trays
located under the floorboards



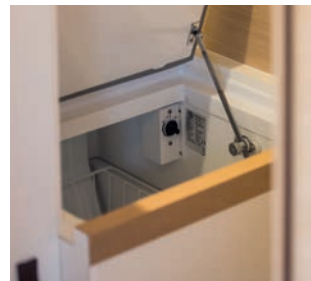
UTILITY ROOM (available in the 2 cabins version)



Washing machine and tumble dryer (option IA L03)



Additional fridge in the utility room (option IA A16)



OWNER FORWARD CABIN

Spacious and comfortable owner cabin with large closets (additional equipment options are available)



OWNER FORWARD CABIN (continued)



Private head shower with the same flooring as the cabin
(no plastic floor)



Large and long wardrobe
with LED lights inside

Soft-return drawers

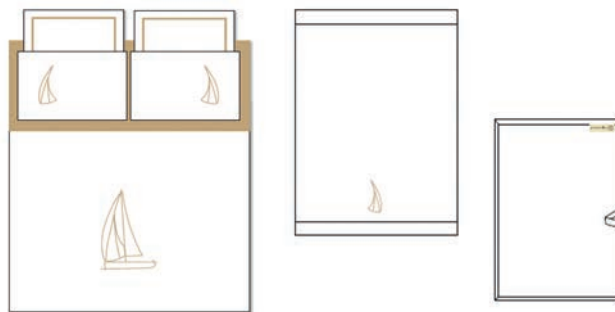
OWNER FORWARD CABIN (continued)

New 2020: Kit bedding and towels Mona Lison

Master Cabin

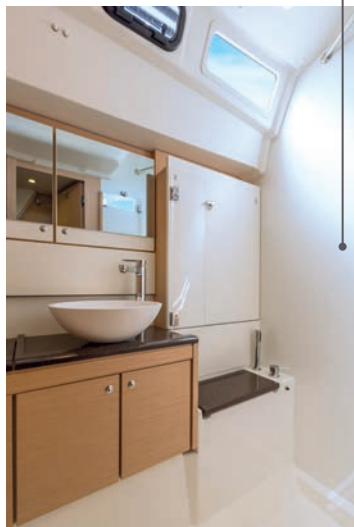
300 TC combed cotton sateen bed set

- 1 Beige fitted sheet
- 1 White and beige, reversible duvet cover, beige sailboat embroidery on white side
- 2 White pillow cases 65 x 65 cm + beige contrast bourdon trim
- 2 White pillow cases 50 x 70 cm + beige sailboat embroidery
- 1 Merino wool duvet, 200 g/m²
- 2 Merino wool pillows 65 x 65 cm, 1000 g/m²
- 2 Merino wool pillows 50 x 70 cm, 1000 g/m²
- 2 White towel sets + Jeanneau signature embroidery



VIP AFT CABIN

Private bathroom with separated shower cabin keeping WC and sink dry



Indirect LED lighting



Headroom above the VIP berth allows for a sleeping position with the head aft, without having to crawl when lying down or getting up. Moreover, the bulkhead makes a perfect backrest for reading... a feature more typically found aboard a 60-footer!

Large bed : 160 cm x 201 cm

Upholstered headboard
Individual pack

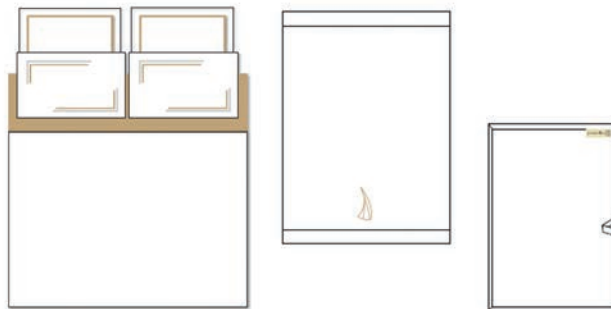
VIP AFT CABIN (continued)

New 2020: Kit bedding and towels Mona Lison

VIP Cabin

300 TC combed cotton sateen bed set

- 1 Beige fitted sheet
- 1 White and beige, reversible duvet cover
- 2 White pillow cases 65 x 65 cm + beige contrast bourdon trim
- 2 White pillow cases 50 x 70 cm + 2 double bourdon angles
- 1 Merino wool duvet, 200 g/m²
- 2 Merino wool pillows 65 x 65 cm, 1000 g/m²
- 2 Merino wool pillows 50 x 70 cm, 1000 g/m²
- 2 White towel sets + Jeanneau signature embroidery



GUEST AFT CABIN

Aft shower and head compartment



Indirect LED lighting

A double berth with PREMIUM mattress



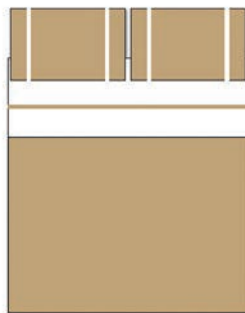
GUEST AFT CABIN (continued)

New 2020: Kit bedding and towels Mona Lison

Guest Cabin

300 TC combed cotton sateen bed set

- 1 Beige fitted sheet
- 1 White and beige, reversible duvet cover + horizontal grosgrain ribbon
- 2 Beige pillow cases 50 x 70 cm + 2 vertical grosgrain ribbons
- 1 Merino wool duvet, 200 g/m²
- 2 Merino wool pillows 50 x 70 cm, 1000 g/m²
- 2 White towel sets + Jeanneau signature embroidery



SKIPPER CABIN

Skipper cabin only available in the 2 cabins version

Direct access to the cockpit via a ladder



SAIL AND RIG PLANS - SAILS FOR EVERY SAILOR

Select the sail plan that best fits your style:

- **A very balanced sail plan** for maximum performance while limiting the loads on the sheets
- Multiple rigging configurations to suit each customer's cruising style (self-tacking, furling or full-batten mainsail, Code 0, etc)
- Choice between Dacron and Lite Skin® sails, and a classic or furling mast



SPECIFICATIONS

FURLING MAINSAIL :

- Dacron®
- Horizontal panels
- UV-stabilised thread
- Radial reinforcements
- Draft stripe
- Adjustable leech line
- UV protection at sheet attachment
- **Area: 52.2 m²**



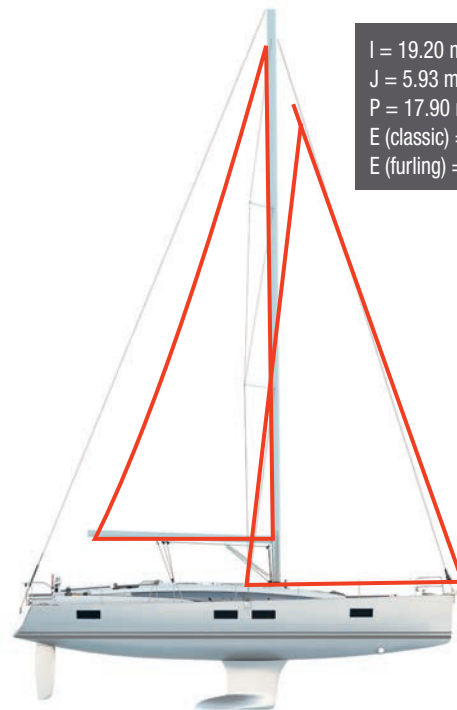
LARGE OVERLAPPING FURLING GENOA (110%) :

- Dacron®
- Horizontal panels
- UV-stabilised thread
- Webbing strap at head
- Bolt-rope for furler
- Anti-UV protection on foot and leech
- Draft stripe
- Webbing strap at tack
- Reefing marks
- Adjustable leech line
- **Area: 54.8 m²**



ADVANTAGES

- Easy to handle sail plan
- Versatile and balanced sail plan at all sailing angles

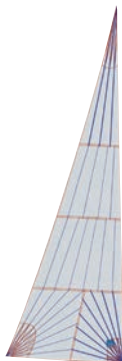


$I = 19.20 \text{ m}$
 $J = 5.93 \text{ m}$
 $P = 17.90 \text{ m}$
 $E (\text{classic}) = 6.00 \text{ m}$
 $E (\text{furling}) = 6.30 \text{ m}$

SPECIFICATIONS

FURLING MAINSAIL:

- Dacron®
- Triradial cut
- UV-stabilised thread
- Radial reinforcements
- Draft stripe
- Adjustable leech line
- UV protection at sheet attachment
- Replaces the standard mainsail
- **Area: 44.9 m²**



SPECIFICATIONS

OVERLAPPING FURLING GENOA (110 %):

- Dacron®
- Triradial cut
- UV-stabilised thread
- Webbing strap at head
- Bolt-rope for furler
- Anti-UV protection on foot and leech
- Radial reinforcements
- Draft stripe
- Webbing strap at tack
- Reefing marks
- Adjustable leech and foot lines
- Replaces the standard genoa
- **Area: 49 m²**



ADVANTAGES

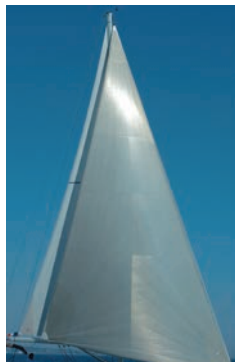
- Sail plan geometry is identical to the standard sail plan providing the same balance, versatility and ease of handling
- High-end sail cloth material means less stretch and better performance
- Tri radial cut ensures better sail shape and improved resistance to wear
- Balanced sail plan for all sailing angles
- Easy to use in all conditions

SPECIFICATIONS

CODE 0

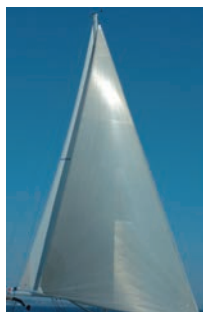
Selden continuous line furler :

- Laminate Mylar/Aramid X-Grid fabric in light grey
- Translucent grey colour
- Triradial cut
- Anti twist luff cord
- UV-stabilised thread
- Straps for sheet attachment
- Adjustable leech and foot lines
- Requires rigging for asymmetrical spinnaker / Code 0
- **Area: 100 m²**



ADVANTAGES

- A light wind sail designed for use between 60° and 120°
- Continue to sail when others have given up and turned on the motor
- Continuous line furler allows easy deployment and furling from the cockpit
- Ideal addition to boats with small overlapping jibs and self-tacking jibs



CODE 0: MYLAR ARAMID X-GRID

For the development of the new Code 0 sails on a continuous line furler, Jeanneau selected a sail cloth that is perfectly adapted for use in light airs. Highly resistant, light weight and able to be furled, the Mylar Aramid X-Grid has a light grey finish that is translucent.

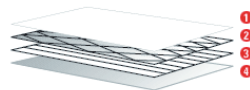
Unidirectional Aramid fibres, vacuum-bagged together between two polyester films, provide an unequalled resistance to weight ratio. This ultra light sail is easy to handle and fills with the slightest puff of wind.

Adding the X-Grid® polyester fibres at a 6° angle provides excellent bias control in all directions and improves sail shaping, as well as, resistance to tearing.

Lastly, a taffeta is added to the external laminate of the sail cloth to protect the sail from ultraviolet light and wear during furling or storage.

The Code 0 sails from Jeanneau integrate these high-performance materials to meet the exacting demands of our owners. In addition to these high-end materials, the look of these sails sets Jeanneau apart.

- 1 - Polyester film
- 2 - X-Grid® fibres
- 3 - Unidirectional Aramid fibres
- 4 - Protective taffeta



SPECIFICATIONS

ARAMID SPORT LITE SKIN®:

The Aramid Sport Lite Skin® used for the Jeanneau 51, is a process that uses high performance tenacity fibers in aramid within serts and X-PLY that combines strength and stability.

TECHNICAL SPECIFICATIONS:

FULL BATTEN MAINSAIL:

- Glued and sewn construction
- Radial patches
- Shape stripes and telltales
- Low-friction rings for the reefs clews and tacks
- Hand finishing
- Composite battens
- UV treated thread
- Batten boxes

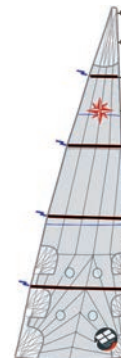
ROLLER FURLING GENOA:

- Glued and sewn construction
- Radial patches
- Sunbrella® UV Cover
- Shape stripes, telltales

SPECIFICATIONS

MAINSAIL:

- Aramid Sport Lite Skin®
- Triradial cut
- Stainless steel eyes
- UV-stabilised thread
- Draft stripe
- Radial reinforcements
- Adjustable leech and foot lines
- Loose-footed
- Fibreglass battens
- 2 reef points each with singleline reefing system.
(Third classic reef point)
- Replaces the standard mainsail
- Included in Tall mast option
- Lazy bag included
- Area: 62.5 m²



ADVANTAGES

- High-end sail cloth material means less stretch and better performance
- Tri radial cut ensures better sail shape and improved resistance to wear

SPECIFICATIONS

SELF-TACKING FURLING JIB:

- Aramid Sport Lite Skin®
- Triradial cut
- UV-stabilised thread
- Webbing strap at head
- Bolt-rope for furler
- Anti-UV protection on foot and leech
- Draft stripe
- Radial reinforcements
- Webbing strap at tack
- Adjustable sheet attachment
- Adjustable leech line
- Replaces the standard genoa
- Requires deck hardware for self-tacking jib
- **Area: 41.6 m²**



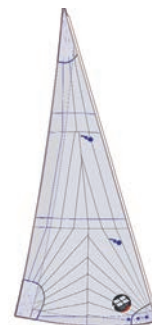
ADVANTAGES

- Sail plan is easy to handle in all conditions
- Very simple tacks and jibs
- Excellent upwind pointing abilities
- A sail plan ideally suited for short-handed sailing

SPECIFICATIONS

MYLAR FURLING GENOA PERFORMANCE 110 %:

- Aramid Sport Lite Skin®
- Triradial cut
- UV-stabilised thread
- Webbing strap at head
- Bolt-rope for furler
- Anti-UV protection on foot and leech
- Radial reinforcements
- Draft stripe
- Webbing strap at tack
- Reefing marks
- Adjustable leech line
- Replaces the standard genoa
- Included in tall mast (Performance) option
- **Area : 54.8 m²**



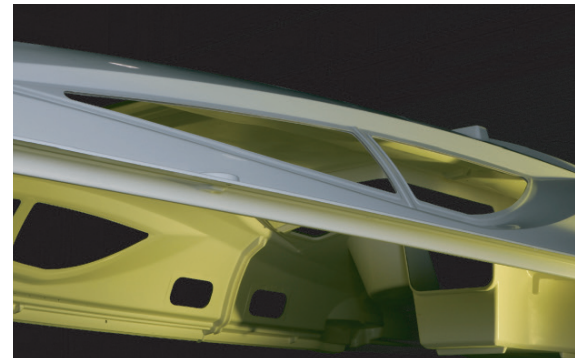
PRISMA PROCESS



Leader in vacuum bagging technology for the construction of racing boats, JTA developed an resin injection process applicable to the construction of cruising boats. By using advanced engineering, precisely positioned layers of glass fabric and mat and specially developed core materials, Jeanneau is able to mould a deck to exacting tolerances. Jeanneau's leadership in this domain gives it a substantial advantage over its competitors and ensures unequalled quality to the customer.

This 21st century technology allows Jeanneau to manufacture complex fibreglass parts with:

- Perfect finish on both sides (no need for a counter mould)
- Reduced weight (providing the sailboat better stability/performance)
- Increased strength and rigidity of the piece (quality of lay-up)
- Reduction by 90% of VOC emissions (environmentally-friendly)
- Optimum working conditions for the production team (no contact with resins/catalysts)
- High quality parts (precise control of gelcoat, core materials and resin injection)

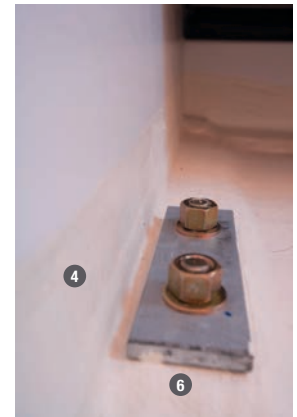


COUNTER-MOULDING

3rd generation hull structure

Jeanneau has long been known for strong and seaworthy boats. Today the technology of boatbuilding has evolved, but our commitment to this tradition has not wavered. The Jeanneau 3rd Generation Hull Structure combines the latest in fiberglass technology with modern yacht design to deliver a structural reinforcement perfectly adapted to the demands of the offshore sailor.

- ❶ High-load zones cut-out for access to the hull
- ❷ Integrated repair area at aft end of keel
- ❸ Structure is precisely placed in the hull
- ❹ Glued and relaminated to the hull for strength
- ❺ Acts as a support for the floorboards
- ❻ Keel bolts located near vertical members and through counter mould and hull
- ❼ Limber holes at hull level for efficient drainage
- ❽ Counter mould remains below level of floorboards and is not visible



ALPI® WOOD

SALES POINTS:

Environmental:

- Ayous (Triplochiton scleroxylon - Sterculiacées) trees in managed forests of indigenous hardwoods are selected and cut, with a constant care given towards long term preservation of natural resources.
- Teak and other soft rainforest woods often come from geopolitically sensitive regions and are not managed in a sustainable way.

Quality:

- These ALPI® wood panels are substantially more expensive and reliable than standard marine plywood. They are used by top of the line furniture manufacturers, as well as many exclusive super-yacht builders (for example Azimut and Ferretti only use ALPI® wood).
- Consistency of finish and colors throughout the boat.
- Elimination of “defects” in wood panels.

Durability:

- Harder finish that is more resistant to humidity
- Better resistance to UV
- Easier repairs as veneer is tinted through and through so clear varnishes can be used



There are four elements of decoration on board that contribute to overall design harmony:

- 1- Saloon seating and seat backs
- 2- Cabin seating
- 3- Bed skirting
- 4- Headboards

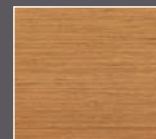


When a fabric or leather is selected, it is applied in these four areas throughout the boat.

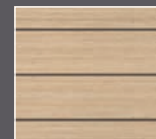
Interior upholstery	PVC IVORY	SEA SAND	STONE GREY	LINEN	LEATHER
	PVC Marlin Ivory	Alcantara Sea Sand	Alcantara Stone Grey	Libeco Souris	
Saloon seating					5 colour choices available (See the selection on the following page)
Cabin seating					
Bed skirting					
Headboards					

INTERIOR AMBIANCES

► STANDARD

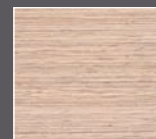


Floodboard: Alpi® Teak

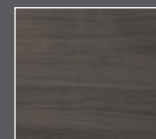


Interior woodwork:
Oak laminate

► OPTION



Floodboard:
Alpi® White Oak



Interior woodwork:
Dark Oak

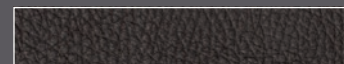
BEDS

► PREMIUM MATTRESS

Ultra-Fresh® antimicrobial, anti-bacterial and hypoallergenic mattress cover

LEATHERETTE WRAP

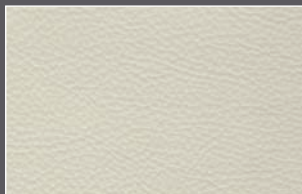
► DEVON CHOCO LEATHER



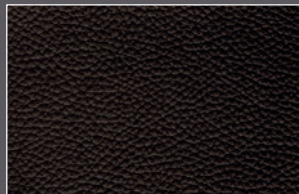
Foglizzo, Italian leather designer since 1921, has inherited the best know-how for generations and uses traditional techniques thanks to qualified craftsmen.

Foglizzo is driven by a culture of excellence, technical innovation and a unique ability to understand customer needs.

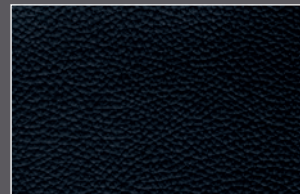
DUKE LEATHER



DK01 White



DK02 Chocolate

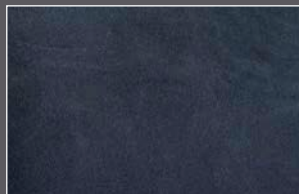


DK26 Blue Night

LUGANO LEATHER



LG02 Mastic



LG10 Saphir

EXTERIOR FABRICS

SPRAYHOOD PROTECTION BIMINI / LAZY BAG



Sunbrella® Plus Charcoal Grey



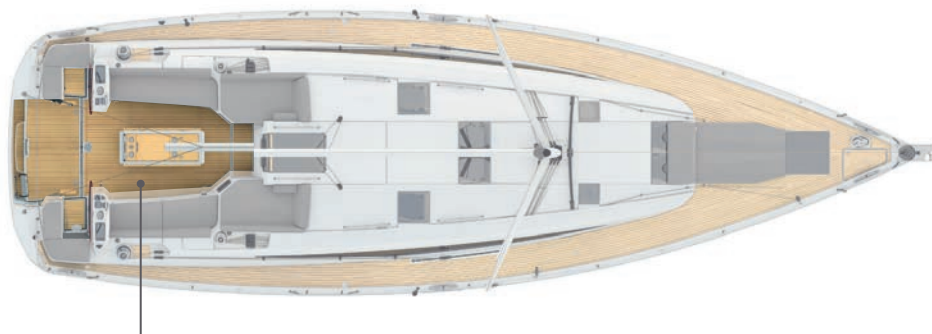
COCKPIT CUSHIONS (BACKRESTS / SEATS)



Bora Bora Grey



TERRACE PACK



Terrace teak floor
Teak floor in the rest of the cockpit

Electric foldable terrace
Wireless remote to open
and close the terrace

Large bathing ladder



INDIVIDUAL PACK (choices: PVC Ivory, Linen, Alcantara)

Wall-mounted light fixtures and reading lights in forward cabin

Upholstered headboard in owner's cabin



Door handle in leather for forward cabin

Upholstered headboard in VIP cabin

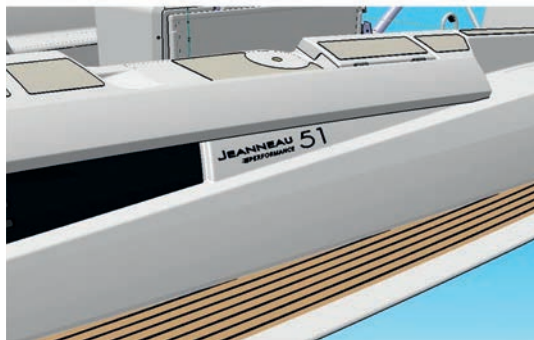


Upholstered sofa skirting and soft, cushioned seating in the saloon

PERFORMANCE PACK

- Performance logo

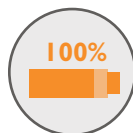
≡ PERFORMANCE



- Sails Performance (Aramid Sport Lite Skin®)
- Dyneema textile lifelines

LITHIUM BATTERIES

EPSILON – TECHNOLOGIE LIFEPO4



GREAT AUTONOMY
100% of useable energy



LIGHTWEIGHT!
With equivalent energy:
More than 65% in weight gain
= reduced volume !



MAXIMUM SERVICE LIFE
≈ 5 000 cycles



**TOLERANCE
TO HIGH
TEMPERATURES**



OPTIMUM COMFORT
Compatible with powerful
230V AC/DC inverters!
NO NEED TO Compromise!



SUPER-FAST CHARGING
2 hours when under power
1 hour when charging with solar cells
in optimal conditions



PEACE OF MIND
Very low self-discharge;
store your battery safely
for several months

Number of domestic batteries 90Ah Lithium

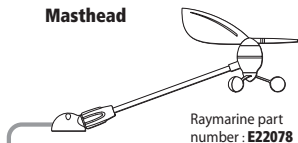
Sun Fast 3300	2
Sun Fast 3600	2

Sun Odyssey 349	1
Sun Odyssey 389	1
Sun Odyssey 410	2
Sun Odyssey 440	2
Sun Odyssey 490	3

Jeanneau 51	3
Jeanneau 54	3

Jeanneau 51-54 Cruising Electronic Pack

Masthead



Cockpit port

Cockpit starboard

i70s High-resolution colour display with Lighthouse II software showing digital analogue and graphical formats.

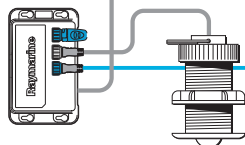


p70s Colour Autopilot Control Head
Raymarine part number : **E70331**



Speed/Depth/Temp Smart Transducer
Raymarine part number : **A22111**

Raymarine part number : **E70010**



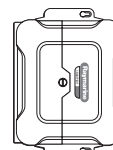
Charts Table

Radio VHF DCS Ray90
Supplied with 1 x handset and loudspeaker



Raymarine part number :
E70492 all versions

Autopilot

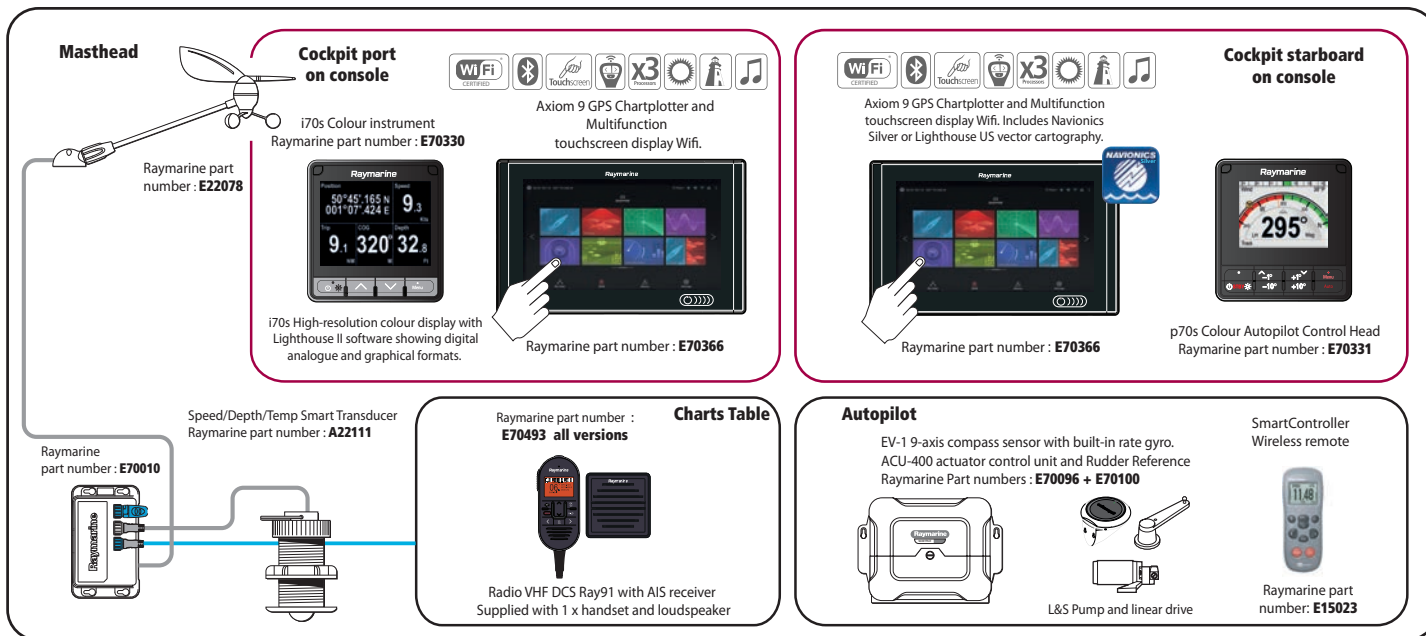


EV-1 9-axis compass sensor with built-in rate gyro.
ACU-400 actuator control unit
Rudder Reference
Raymarine Part numbers : **E70096 + E70100**

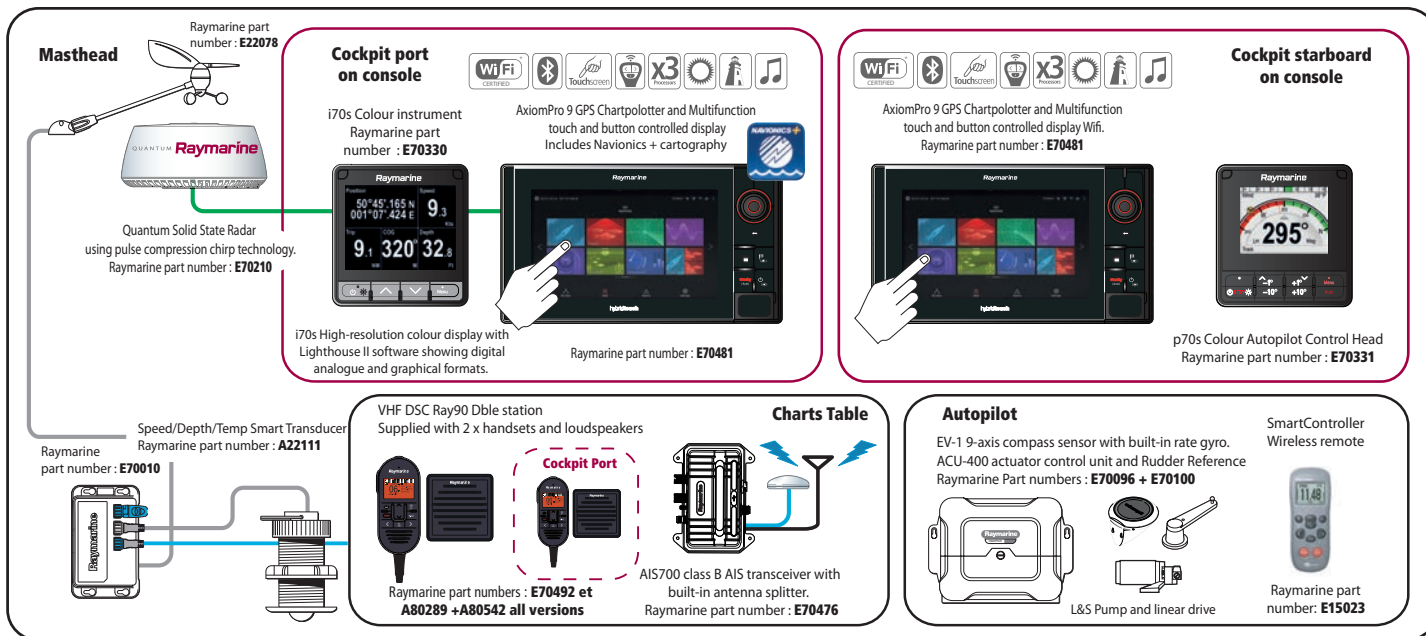


L&S Pump and linear drive

Jeanneau 51-54 Offshore Electronic Pack



Jeanneau 51-54 Ocean Electronic Pack



Jeanneau 51-54 **OPTION**

AxiomPro 9 Multifunction Touch and button controlled 9" Display at the chart table
Not compatible with the Cruising Pack



GPS Chartplotter and Multifunction
 touch and button controlled display Wifi.
 Raymarine part number : **E70481**



AST (ASSISTED SAIL TRIM)

Jeanneau's exclusive Assisted Sail Trim technology delivers peace of mind and ease of handling, just like having an additional crew member on board. This exclusive Jeanneau Technology, developed in partnership with Harken, the world's leading deck hardware and sailing equipment supplier. This innovative system relies on proven equipment and operates in collaboration with major electronics manufacturers.

CONCEPT

This Jeanneau innovation, co-developed in partnership with Harken, allows the sailor to trim the sails and remotely operate the winches directly from a screen at the helm station.

Designed to ensure comfortable and easy sailing, the Assisted Sail Trim system is ideal for short-handed cruising.

100% user-friendly and intuitive, it brings numerous features to cruising in the same way as the autopilot does.

Cette innovation Jeanneau développée en partenariat avec Harken permet de régler les voiles directement depuis un écran au poste de barre et de contrôler les winchs à distance.

Conçu pour le confort de navigation et la sérénité de l'utilisateur, le système ASSISTED SAIL TRIM est idéal pour les navigations en équipage réduit.

100% convivial et intuitif, il apporte de nombreux avantages à la croisière au même titre que le pilote automatique.

1. INITIAL TRIMMING RÉGLAGE INITIAL

The system relies on a correct initial trimming of the sails to the desired heading. This trimming can be adjusted directly from the helm station.

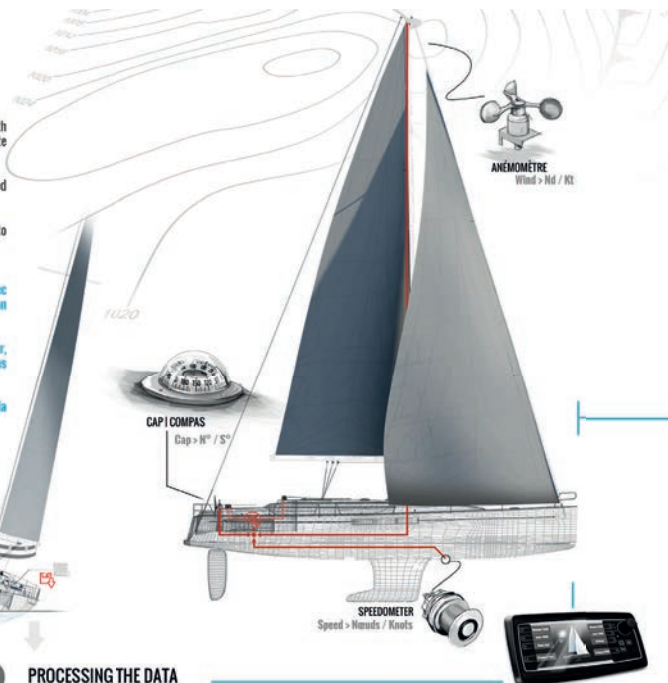
Le système s'appuie sur un réglage initial des voiles selon le cap. Ce réglage peut s'effectuer directement du poste de barre.



2. PROCESSING THE DATA LECTURE DES PARAMÈTRES

Navigation data (wind, heading, speed...) is collected in real time by the onboard electronics.

Les données de navigation (vent, cap, vitesse...) sont captées en temps réel par la centrale électronique.

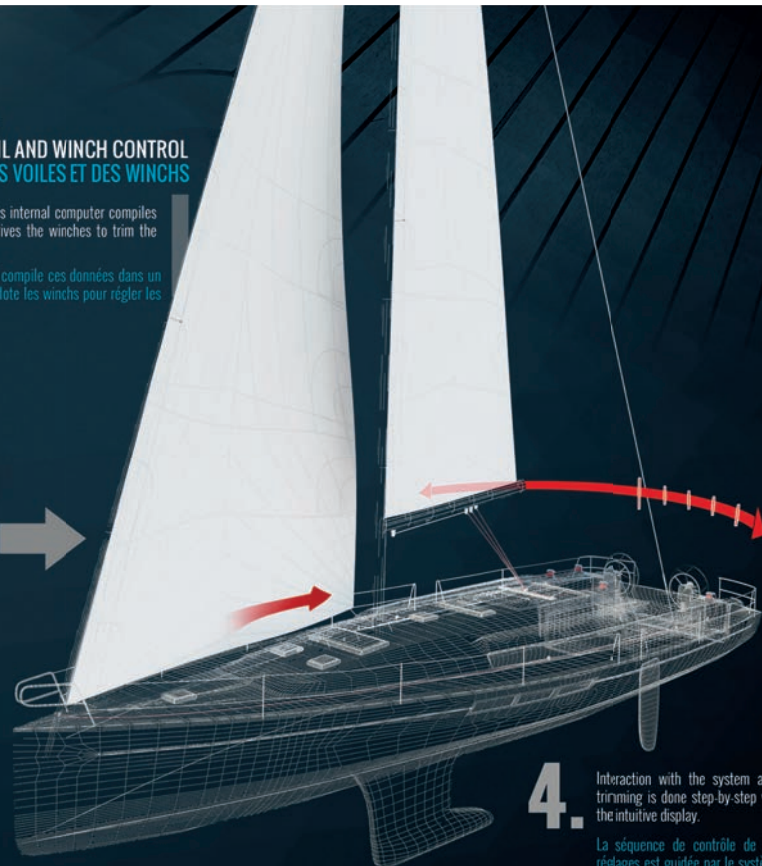




3. SAIL AND WINCH CONTROL GESTION DES VOILES ET DES WINCHS

The AST system's internal computer compiles this data and drives the winches to trim the sails.

Le système AST compile ces données dans un calculateur et pilote les winchs pour régler les voiles.

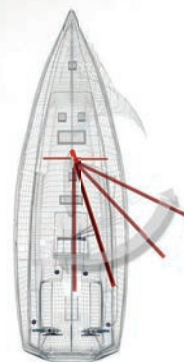


4. Interaction with the system and trimming is done step-by-step via the intuitive display. La séquence de contrôle de ces réglages est guidée par le système via un écran très intuitif.

AUTO TRIM

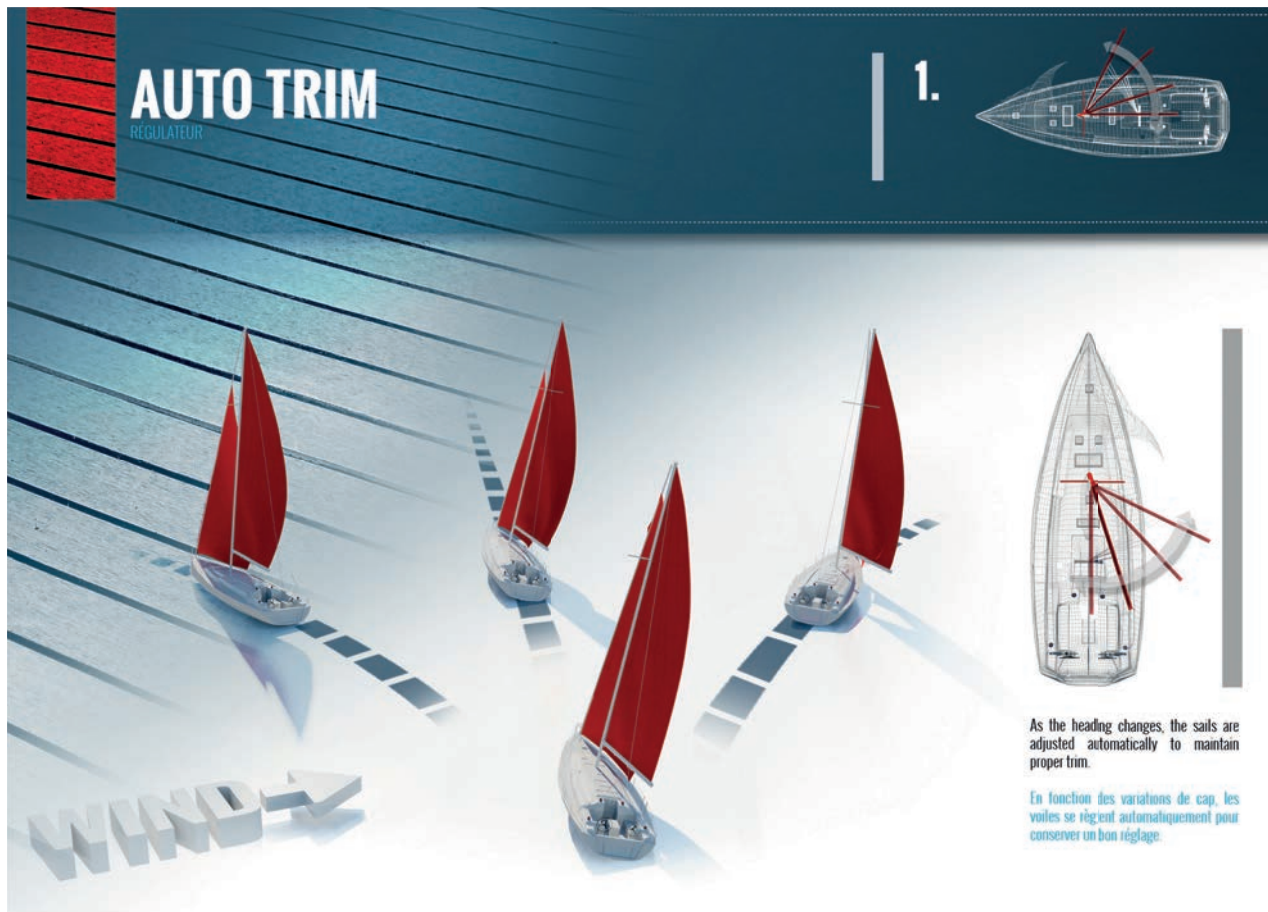
REGULATEUR

1.



As the heading changes, the sails are adjusted automatically to maintain proper trim.

En fonction des variations de cap, les voiles se règlent automatiquement pour conserver un bon réglage.



TRIM THE SAILS
REGLEZ LES VOILES

2.



ACTIVATE AUTO TRIM
ACTIVEZ L'AUTO TRIM

3.



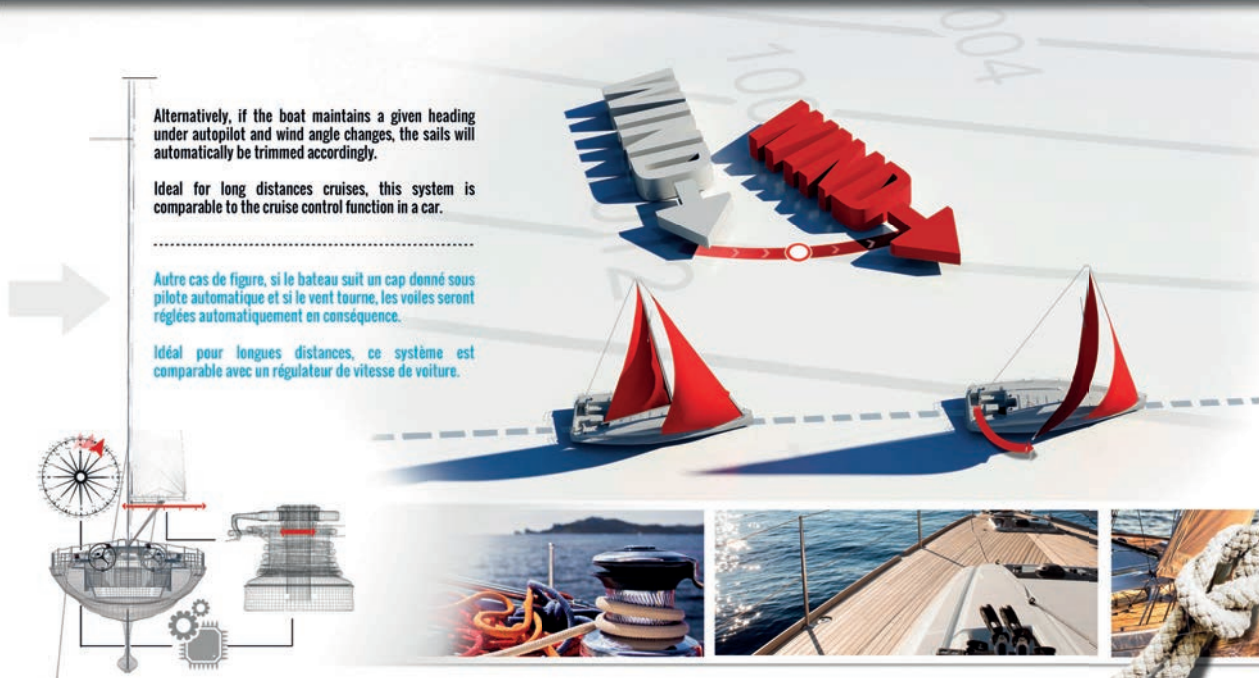
SO EASY TO SAIL
TELLEMENT SIMPLE

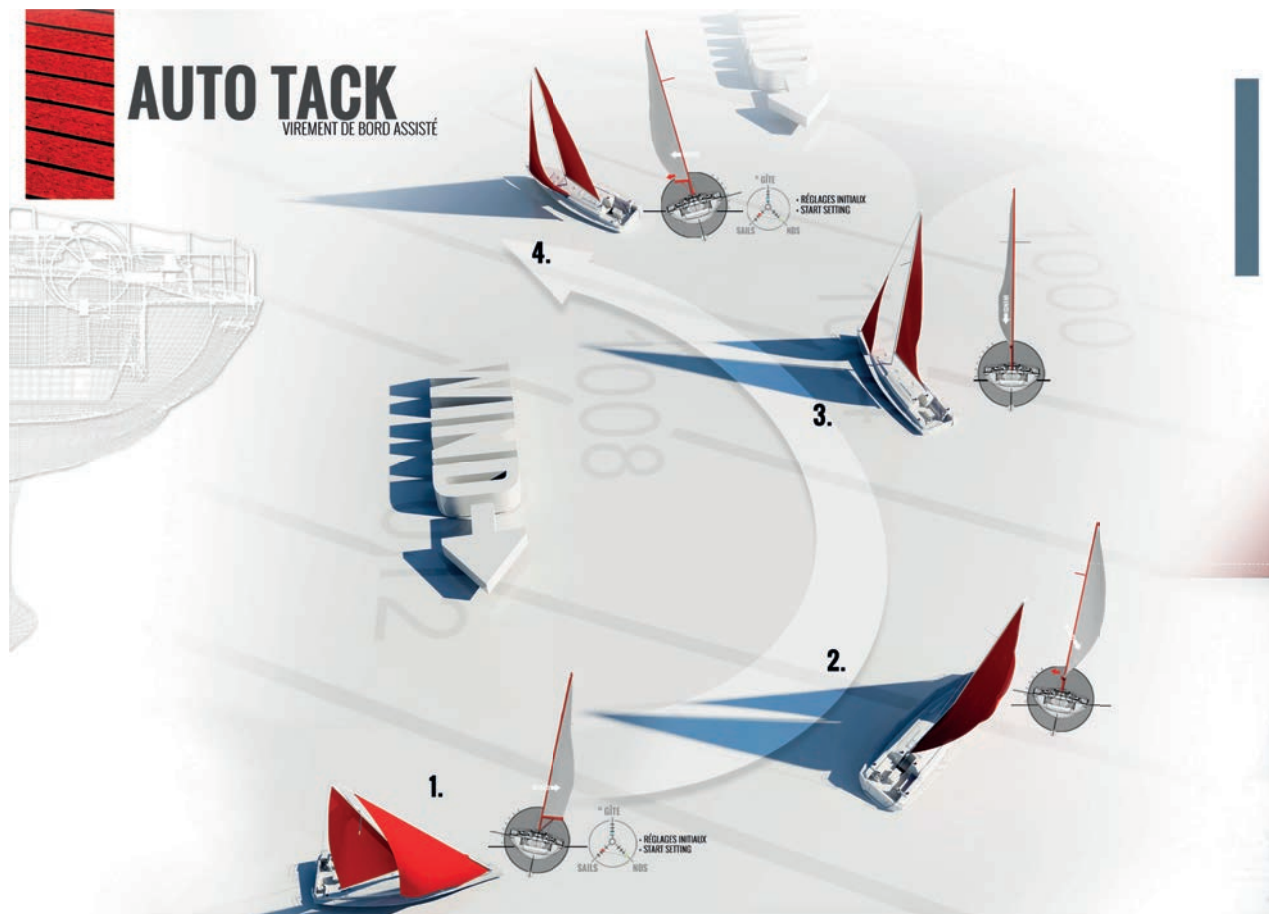
Alternatively, if the boat maintains a given heading under autopilot and wind angle changes, the sails will automatically be trimmed accordingly.

Ideal for long distances cruises, this system is comparable to the cruise control function in a car.

Autre cas de figure, si le bateau suit un cap donné sous pilote automatique et si le vent tourne, les voiles seront réglées automatiquement en conséquence.

Idéal pour longues distances, ce système est comparable avec un régulateur de vitesse de voiture.





The helmsperson pushes the Auto Tack button, and turns the wheel to tack the boat.

The system automatically operates the primary winches to pull in one sheet and ease the other.

Sails are trimmed to the same angle as before the turn, but on the opposite tack.

L'utilisateur appuie sur le bouton auto tack et manœuvre la barre à roue pour que le bateau vire.

Le système gère automatiquement les winchs d'écoutes de génois pour choquer d'un côté et border de l'autre.

Le système retrouve le réglage de voiles défini avant le virement de bord.



1. TRIM THE SAILS
RÉGLEZ LES VOILES



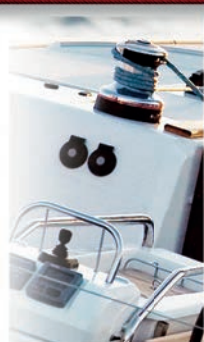
2. ACTIVATE AUTO TACK
ACTIVEZ L'AUTO TACK



3. TURN THE WHEEL
TOURNEZ LA BARRE



4. TACK FINISHED
VIREMENT TERMINE



LIMITER LA GÎTE

Le bateau navigue selon un cap donné avec des voiles correctement réglées et la fonction Auto Trim activée.

Si le vent augmente et que la gîte atteint la limite définie, le système choque automatiquement la grand voile.

Une fois que le bateau retrouve une gîte plus confortable, la voile est à nouveau automatiquement bordée.

