

WHY LEADER 36

Combining elegance, luxury and performance, the Leader lineup stands out with its distinctive design and sporty character.

Designed by Garroni Design, the high-end sporty models have high performance hulls that combine comfortable exteriors with innovation interior layouts. The sleek continuous windows in the hull, the interior is bright and filled with natural light. Numerous entertaining spaces on the Leader line allows for you to enjoy the space comfortably.

MEET HENRI JEANNEAU

In 1957, in the small town of Les Herbiers, France, Henri Jeanneau discovered his love for powerboating. He built his first wooden hull with which he placed first in the 6-hour Paris Race. A year later, the shipyard built its first fiberglass hull – a breakthrough in technology during that time. And now the rest is history.

Today, Jeanneau Outboards are built in Cadillac, Michigan and Ostroda, Poland. Jeanneau has grown over the past 60 years, with more than 400 Jeanneau Dealerships worldwide in nearly 70 countries – including the United States and Canada.



INBOARD 2020

LEADER
SPORTY AND FUN



NC
LIFE ON ONE LEVEL



JEANNEAU

CREATING MEMORIES ON THE
WATER SINCE 1957



▶ **LEADER 36**

Leader



JEANNEAU

105 Eastern Avenue, Suite 203

Annapolis, Maryland USA

P: (410) 280-9400

jeanneau.com

LEADER 46 | 40 | 36 | 33

NC 14 | 38 FLY | 37 | 33

LAYOUT



SPECIFICATIONS	LEADER 36
LOA w/Platforms	38' 1"
Beam	11' 10"
Clearance	OPEN VERSION : 9' 4" SPORTOP VERSION : 9' 7"
Draft	3' 6"
Weight w/ Engine	14,586 lbs
Deadrise	17.1°
Fuel Capacity	148 US Gal
Holding Tank	21 US Gal
Water Capacity	42 US Gal (+option 26 US Gal)
Engine Power Available	D4-270HP VOLVO DIESEL D4-300HP VOLVO DIESEL
Cabins	2
Berths	5
CE Category	B8/C10

CE CE Certification indicates conformity with health, safety, and environmental protection standards for products sold within the European Economic Area (EEA)

*Specifications are subject to change without prior notice. Only the contract you sign with the dealer will reflect the final content of your boat.

KEY FEATURES

- ▶ Electric Sliding Sunroof
- ▶ Exterior Galley (sink + fridge)
- ▶ Forward sundeck with lifting backrest
- ▶ Large modular cockpit salon
- ▶ Large head with separate shower compartment



- ▶ Large forward double berth with separation curtain / Option : sliding retractable door
- ▶ Fully equipped galley



STANDARD SPECIFICATIONS

EXTERIOR FEATURES

OPEN VERSION : GRP arch

SAFETY & NAVIGATION

Electrical instruments switches
Engine electric remote control
Electric windlass
Compass

Navigation lights
Starboard windscreen wiper
Port windscreen wiper
Electric & manual bilge pumps
Volvo automatic trim & trip computer

DECK EQUIPMENT

Forward opening stainless steel pulpit
Hull rubrail
Stern fitting with anchor station
Self draining anchor locker
Forward mooring cleats & midship cleats
Stern mooring cleats
Cockpit & Sportop handrails
Aft platform handrail
Life raft storage

COMFORT EQUIPMENT

Aft sunpad
Pilot bench
Removable teak step at helm station (sportop)
Meridienne for copilot
Copilot bench facing the sea
Opening window to starboard (sportop)
Hot/cold water cockpit shower
U-shape cockpit saloon
Wood cockpit table + cover
Swim platform including swim ladder
Tender & Cockpit locker

COCKPIT GALLEY

Pressured water & sink

INTERIOR FEATURES

«Open space» layout version
Sliding retractable door between the front cabin and the galley
Hull windows
Opening portholes
Additional opening porthole
Varnished saloon table
Curtains set for saloon, cabins & heads
Storages under benchseats

GALLEY

Stainless steel sinks
Gas burner
Fridge 21US Gal
Natural ventilation through opening porthole
Hull window
Top and bottom storage
Dustbin (2tubs)

FORWARD CABIN

Double berth
Hanging locker
Hull windows
Opening portholes
Mirror
Reading lights & USB plugs

AFT CABIN

2 single berths convertible into a double berth
Third single berth
Hanging locker
Opening porthole
Hull window
Bench

Reading light & USB Plugs

HEAD

Hull window
Mirror
Storage compartments
Manual toilet
BATTERY - 12V plug
Battery 115 Ah

UPHOLSTERY & WOOD

EXTERIOR Premium Macadamia



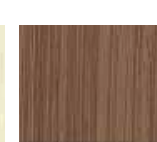
INTERIOR

Linen Oyster
White



WOOD

Walnut



OPTIONS & ACCESSORIES

SAFETY & NAVIGATION

Chain counter and control of windlass from pilot station
Search light
Clear Cruise RAYMARINE
Autopilot RAYMARINE
Autopilot control unit P70RS on the wheelhouse
RAYMARINE QUANTUM 3 digital radar

AIS transceiver
Flaps Zip Wake

DECK EQUIPMENT

Mooring system aft with windlass and stern roller
Covering

EXTERIOR COMFORT

Folding aft & lateral backrests to convert aft bench into sundeck (lounge version)
Lifting backrest for meridienne on portside
LED TV/DVD player/MP3 in cockpit

Aft folding seat on platform instead of the aft sundeck

Protection for cockpit saloon

Set of wheelstation covers

Cockpit sun awning

Cockpit cover

Sprayhood + side curtains (open)

Sprayhood cover (open)

Teak on cockpit floor

Teak on side deck

Manual foldable gangway

Underwater light

Anchor washer

Cockpit aft closing kit Sunworker

Charcoal (Sportop)

COCKPIT GALLEY

Electric grill - Ice maker

Removable gas grill on mast located on the aft platform

BATTERY

Inverter

INTERIOR COMFORT

FUSION audio pack

Pushed air heating system (diesel version only)

Porthole mosquito screens

Roller blind + mosquitoes net on the entrance door

SALON

Saloon convertible into double berth + entrance curtains

(+additional seat-closed interior layout)

TV LED 22" + Radio + MP3 + DVD

GALLEY

White lacquered finish on kitchen top cabinets

FORWARD CABIN

TV LED 22" + Radio + MP3 + DVD

AFT CABIN

Double berth complement

TV LED 22" + Radio + MP3 + DVD

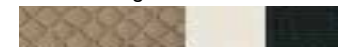
HEAD

Hot water heater

Grey water tank

UPHOLSTERY EXTERIOR

Premium Beige Ice



AWNINGS

Sunbrella Dark Smoke



UPHOLSTERY INTERIOR

Marlin Pure White
Linen Bleu chine
Pearl Grey



WOOD OPTION

White Oak



GOLD PACK INBOARD

Upgraded RAYMARINE Axiom chartplotter 12" replacing axiom 9"

Comfort pack (cupboard cockpit galley - shower wall - stern mooring cleats for cross docking)

Cockpit fridge 10.5 gal

Forward sundeck with lifting backrests

Aft cockpit enclosure kit including aft sunshade

Removable carpet set (saloon/cabin)

Cockpit spotlights

Generator 7.5kw Diesel w/8gal tank

A/C in cockpit 12000BTU

Additional fresh water tank 26 gal

VERSION SILVER

Sportop including electric hard top

Bow thruster

Electronic Pack

Axiom 9RV RAYMARINE

multifunction 12" touch display

with sonar and P79 transducer

P79 RAYMARINE Depth

transducer, VHF

Electric trim tabs

Horn

Mooring kit / Anchoring kit

Opening window to portside

Teak flooring on aft platform

Folding wood cockpit table + cover

Front sundeck shower (cold water)

Dock water inlet

Shower

Fabric covering on cabin bulkheads

Electric fresh water toilet

Vitrocramic cooktop/Microwave

oven

Add Battery 110 AH+ Charger 25A

Premounting TV DVD Fusion

11.5v60 forward salon + TV antenna

Shorepowerfitting + charger

Elegance Pack (exterior leather-

covered handrails inside sportop

padding, luxury boccanegra steering wheel)

Ambiance pack (outside LED lights+inside indirect lighting)

Ventilation Pack (hatch in fwd and aft cabin)